

TEST REPORT

Report No.: **SZ1240313-12683E**

Date: April 19, 2024

Page 1 of 45

Shenzhen Huafurui Technology Co., Ltd

Unit 601-03, 6/F, Block A, Building 1, Ganfeng Technology Building, No. 993 Jiaxian Road, Xiangjiaotang Community, Bantian Street, Longgang District, Shenzhen, P.R. China

Report on the submitted samples said to be:

Sample Description: Smartphone
Style/Item No.: X90
Country of Origin: China
Brand: CUBOT
Sample Receiving Date: March 14,2024
Lately Re-submit Date: April 11,2024
Testing Period: March 14,2024 - April 16,2024
Result: **Please refer to next page(s).**

Signed for and on behalf of

BACL

Queenie Lee

Checked by: _____
Queenie Lee

Len Xie

Approved by: _____
Len Xie



TEST REPORT

Report No.: SZ1240313-12683E

Date: April 19, 2024

Page 2 of 45

Summary of Test Result:

TEST REQUEST

CONCLUSION

A RoHS Directive 2011/65/EU and amendment directives (EU) 2015/863 on Lead,Cadmium, Mercury, Hexavalent Chromium, PBBs & PBDEs, Phthalates(DBP, BBP,DEHP, DIBP) content

A.1 XRF screening test

Pass

A.2 Wet Chemical Testing

A.2.1 PBBs & PBDEs content

Pass

A.3 Phthalates(DBP, BBP, DEHP, DIBP)content

Pass

TEST REPORT

Report No.: **SZ1240313-12683E**

Date: April 19, 2024

Page 3 of 45

A RoHS Directive 2011/65/EU and amendment directives (EU) 2015/863 on Lead, Cadmium, Mercury, Hexavalent Chromium, PBBs & PBDEs, Phthalates(DBP, BBP, DEHP, DIBP) content

A.1 XRF screening test

Test method: IEC 62321-3-1:2013

Seq No.	Tested Part(s)	Result				
		Pb	Cd	Hg	Cr	Br
(1)	White PVC(cable jacket, USB cable)	BL	BL	BL	BL	BL
(2)	Black PVC(wire jacket, USB cable)	BL	BL	BL	BL	BL
(3)	Red PVC(wire jacket, USB cable)	BL	BL	BL	BL	BL
(4)	White plastic(wire jacket, USB cable)	BL	BL	BL	BL	BL
(5)	Green plastic(wire jacket, USB cable)	BL	BL	BL	BL	BL
(6)	Yellow plastic(wire jacket, USB cable)	BL	BL	BL	BL	BL
(7)	Coppery metal(wire, USB cable)	BL	BL	BL	BL	---
(8)	White PVC(type-C plug holder, USB cable)	BL	BL	BL	BL	BL
(9)	Silvery metal(cover, type-C plug, USB cable)	BL	BL	BL	BL	---
(10)	Silvery metal(thin pin, type-C plug, USB cable)	BL	BL	BL	BL	---
(11)	Silvery metal(thick pin, type-C plug, USB cable)	BL	BL	BL	BL	---
(12)	Black plastic(pin holder, type-C plug, USB cable)	BL	BL	BL	BL	BL
(13)	Dark white plastic(insulator, type-C plug, USB cable)	BL	BL	BL	BL	BL
(14)	Translucent plastic(PCB holder, type-C plug, USB cable)	BL	BL	BL	BL	BL
(15)	White printed blue coated beige plastic with coppery metal(PCB, type-C plug, USB cable)	BL	BL	BL	BL	BL
(16)	Silvery solder(PCB, type-C plug, USB cable)	BL	BL	BL	BL	---
(17)	Brown body(SMD capacitor, PCB, type-C plug, USB cable)	BL	BL	BL	BL	BL
(18)	White plastic(type-C plug holder, earphone)	BL	BL	BL	BL	BL
(19)	White soft plastic(cable holder, type-C plug, earphone)	BL	BL	BL	BL	BL
(20)	Silvery metal(cover, type-C plug, earphone)	BL	BL	BL	BL	---
(21)	Silvery metal(thick pin, type-C plug, earphone)	BL	BL	BL	BL	---
(22)	Silvery metal(thin pin, type-C plug, earphone)	BL	BL	BL	BL	---
(23)	Black plastic(insulator, type-C plug, earphone)	BL	BL	BL	BL	BL
(24)*	White printed green coated beige plastic with coppery metal(PCB, type-C plug, earphone)	BL	BL	BL	BL	X
(25)	Silvery solder(PCB, type-C plug, earphone)	BL	BL	BL	BL	---
(26)	White soft plastic(cable clip, earphone)	BL	BL	BL	BL	BL

Bay Area Compliance Laboratories Corp. (Shenzhen)

5/F. (B-West), 6&7/F., The 3rd Phase of Wanli Industrial Building D, Shihua Road, Fubao Community, Fubao Subdistrict, Futian District, Shenzhen, Guangdong, China

QB-CH-R001 (V1.0)

Tel: +86-755-33320018 Fax: +86-755-33320008

TEST REPORT

Report No.: SZ1240313-12683E

Date: April 19, 2024

Page 4 of 45

Seq No.	Tested Part(s)	Result				
		Pb	Cd	Hg	Cr	Br
(27)	White soft plastic(splitter, earphone)	BL	BL	BL	BL	BL
(28)	White soft plastic(thick wire jacket, earphone)	BL	BL	BL	BL	BL
(29)	White soft plastic(thin wire jacket, earphone)	BL	BL	BL	BL	BL
(30)	Blue enameled wire(wire core, earphone)	BL	BL	BL	BL	BL
(31)	Green enameled wire(wire core, earphone)	BL	BL	BL	BL	BL
(32)	Red enameled wire(wire core, earphone)	BL	BL	BL	BL	BL
(33)	Coppery enameled wire(wire core, earphone)	BL	BL	BL	BL	BL
(34)	White fabric(interlining, wire core, earphone)	BL	BL	BL	BL	BL
(35)	White plastic(cover, controller, earphone)	BL	BL	BL	BL	BL
(36)	Blue coated beige plastic with coppery metal(PCB, controller, earphone)	BL	BL	BL	BL	BL
(37)	Silvery solder(PCB, controller, earphone, raw material)	BL	BL	BL	BL	---
(38)	Silvery metal(key, PCB, controller, earphone)	BL	BL	BL	BL	---
(39)	Clear plastic with adhesive(key holder, PCB, controller, earphone)	BL	BL	BL	BL	BL
(40)	Silvery body(SMD microphone, PCB, controller, earphone)	BL	BL	BL	BL	BL
(41)* ³	Black body(SMD resistor, PCB, controller, earphone)	OL (2265)	BL	BL	BL	BL
(42)	White soft plastic(cable holder, earplug, earphone)	BL	BL	BL	BL	BL
(43)	White plastic(shell, earplug, earphone)	BL	BL	BL	BL	BL
(44)	Dark blue fabric with adhesive(dust gauze, earplug, earphone)	BL	BL	BL	BL	BL
(45)*	Green coated beige plastic with coppery metal(PCB, speaker, earplug, earphone)	BL	BL	BL	BL	X
(46)	Silvery solder(PCB, speaker, earplug, earphone, raw material)	BL	BL	BL	BL	---
(47)	White/red dry glue(speaker, earplug, earphone)	BL	BL	BL	BL	BL
(48)	White EVA with adhesive(pad, speaker, earplug, earphone)	BL	BL	BL	BL	BL
(49)	White fabric with adhesive(dust gauze, speaker, earplug, earphone)	BL	BL	BL	BL	BL
(50)	Silvery metal(cover, speaker, earplug, earphone)	BL	BL	BL	BL	---
(51)	Silvery metal(cap, speaker, earplug, earphone)	BL	BL	BL	BL	---
(52)	Clear plastic(vibrating diaphragm, speaker, earplug, earphone)	BL	BL	BL	BL	BL
(53)	Coppery metal(coil, speaker, earplug, earphone)	BL	BL	BL	BL	---
(54)	Silvery metal(magnet spacer, speaker, earplug, earphone)	BL	BL	BL	BL	---
(55)	Silvery magnet(speaker, earplug, earphone)	BL	BL	BL	BL	BL
(56)	White plastic(shell, adapter)	BL	BL	BL	BL	BL

Bay Area Compliance Laboratories Corp. (Shenzhen)

5/F. (B-West), 6&7/F., The 3rd Phase of Wanli Industrial Building D, Shihua Road, Fubao Community, Fubao Subdistrict, Futian District, Shenzhen, Guangdong, China

Tel: +86-755-33320018 Fax: +86-755-33320008

QB-CH-R001 (V1.0)

TEST REPORT

Report No.: SZ1240313-12683E

Date: April 19, 2024

Page 5 of 45

Seq No.	Tested Part(s)	Result				
		Pb	Cd	Hg	Cr	Br
(57)	White plastic(pin holder, adapter)	BL	BL	BL	BL	BL
(58)	Silvery metal(pin, adapter)	BL	BL	BL	BL	---
(59)*	White printed green coated beige plastic with coppery metal(big PCB, adapter)	BL	BL	BL	BL	X
(60)	Silvery solder(big PCB, adapter)	BL	BL	BL	BL	---
(61)	Silvery metal(contact plate, big PCB, adapter)	BL	BL	BL	BL	---
(62)	Silvery metal(cooling fin, big PCB, adapter)	BL	BL	BL	BL	---
(63)	Black plastic(insulation sheet, big PCB, adapter)	BL	BL	BL	BL	BL
(64)	Clear plastic with adhesive(double sided tape, insulation sheet, big PCB, adapter)	BL	BL	BL	BL	BL
(65)	Grey dry glue(big PCB, adapter)	BL	BL	BL	BL	BL
(66)	Deep grey dry glue(big PCB, adapter)	BL	BL	BL	BL	BL
(67)	Black printed clear plastic with adhesive(label, transformer, big PCB, adapter)	BL	BL	BL	BL	BL
(68)	Light yellow plastic with adhesive(tape, transformer, big PCB, adapter)	BL	BL	BL	BL	BL
(69)	Black plastic(coil holder, transformer, big PCB, adapter)	BL	BL	BL	BL	BL
(70)	Translucent plastic(sleeve, coil, transformer, big PCB, adapter)	BL	BL	BL	BL	BL
(71)	Black plastic(sleeve, coil, transformer, big PCB, adapter)	BL	BL	BL	BL	BL
(72)	Yellow enameled wire(coil, transformer, big PCB, adapter)	BL	BL	BL	BL	BL
(73)	Coppery metal(coil, transformer, big PCB, adapter)	BL	BL	BL	BL	---
(74)	Black magnet(frame, transformer, big PCB, adapter)	BL	BL	BL	BL	BL
(75)	Silvery metal(connecting wire, transformer, big PCB, adapter)	BL	BL	BL	BL	---
(76)	Grey printed brown plastic(sleeve, big capacitor, big PCB, adapter)	BL	BL	BL	BL	BL
(77)	Silvery body(big capacitor, big PCB, adapter)	BL	BL	BL	BL	BL
(78)	Grey printed black plastic(sleeve, small capacitor, big PCB, adapter)	BL	BL	BL	BL	BL
(79)	Silvery body(small capacitor, big PCB, adapter)	BL	BL	BL	BL	BL
(80)	Yellow body(capacitor, big PCB, adapter)	BL	BL	BL	BL	BL
(81)	Red printed silvery body(capacitor, big PCB, adapter)	BL	BL	BL	BL	BL
(82)	Blue body(capacitor, big PCB, adapter)	BL	BL	BL	BL	BL
(83)	Black plastic(sleeve, inductor, big PCB, adapter)	BL	BL	BL	BL	BL
(84)	Black magnet(coil holder, inductor, big PCB, adapter)	BL	BL	BL	BL	BL
(85)	Brick red body(fuse, big PCB, adapter)	BL	BL	BL	BL	BL
(86)	Black body(thermistor, big PCB, adapter)	BL	BL	BL	BL	BL

TEST REPORT

Report No.: **SZ1240313-12683E**

Date: April 19, 2024

Page 6 of 45

Seq No.	Tested Part(s)	Result				
		Pb	Cd	Hg	Cr	Br
(87)	Black body(big IC, big PCB, adapter)	BL	BL	BL	BL	BL
(88)	Black body(medium IC, big PCB, adapter)	BL	BL	BL	BL	BL
(89)	Black body(small IC, big PCB, adapter)	BL	BL	BL	BL	BL
(90)	Black plastic(cover, bridge rectifier, big PCB, adapter)	BL	BL	BL	BL	BL
(91)* ²	Coppery metal with solder(inner, bridge rectifier, big PCB, adapter)	OL (902098)	BL	BL	BL	---
(92)	Black plastic(cover, SMD triode, big PCB, adapter)	BL	BL	BL	BL	BL
(93)* ²	Coppery metal with solder(inner, SMD triode, big PCB, adapter)	OL (855604)	BL	BL	BL	---
(94)	Black body(big SMD diode, big PCB, adapter)	BL	BL	BL	BL	BL
(95)	Black body(small SMD diode, big PCB, adapter)	BL	BL	BL	BL	BL
(96)* ³	Black/white body(SMD resistor, big PCB, adapter)	OL (1963)	BL	BL	BL	BL
(97)	Brown body(SMD capacitor, big PCB, adapter)	BL	BL	BL	BL	BL
(98)*	White printed green coated beige plastic with coppery metal(small PCB, adapter)	BL	BL	BL	BL	X
(99)	Silvery solder(small PCB, adapter)	BL	BL	BL	BL	---
(100)	Silvery metal(cover, type-C socket, small PCB, adapter)	BL	BL	BL	BL	---
(101)	Silvery metal(pin, type-C socket, small PCB, adapter)	BL	BL	BL	BL	---
(102)	Black plastic(insulator, type-C socket, small PCB, adapter)	BL	BL	BL	BL	BL
(103)	Black body(IC, small PCB, adapter)	BL	BL	BL	BL	BL
(104)	Black/white body(SMD resistor, small PCB, adapter)	BL	BL	BL	BL	BL
(105)	Brown body(SMD capacitor, small PCB, adapter)	BL	BL	BL	BL	BL
(106)	Clear plastic(flashlight shield, smartphone)	BL	BL	BL	BL	BL
(107)	Black coated clear glass(rear camera shield, smartphone)	BL	BL	BL	BL	BL
(108)	Blue plated silvery metal(rear camera protector, smartphone)	BL	BL	BL	BL	---
(109)	Black plastic(rear camera protector, smartphone)	BL	BL	BL	BL	BL
(110)	Black EVA with adhesive(big rear camera pad, rear camera protector, smartphone)	BL	BL	BL	BL	BL
(111)	Black plastic with adhesive(double sided tape, rear camera shield, smartphone)	BL	BL	BL	BL	BL
(112)	Clear plastic with adhesive(double sided tape, rear camera protector, smartphone)	BL	BL	BL	BL	BL

TEST REPORT

Report No.: **SZ1240313-12683E**

Date: April 19, 2024

Page 7 of 45

Seq No.	Tested Part(s)	Result				
		Pb	Cd	Hg	Cr	Br
(113)	Green/black coated clear glass(back shroud, smartphone)	BL	BL	BL	BL	BL
(114)	Deep grey soft plastic with adhesive(double sided tape, back shroud, smartphone)	BL	BL	BL	BL	BL
(115)	Black EVA with adhesive(pad, back shroud, smartphone)	BL	BL	BL	BL	BL
(116)	Black plated silvery metal(screw, smartphone)	BL	BL	BL	BL	---
(117)	Silvery metal(screw, smartphone)	BL	BL	BL	BL	---
(118)	Black/grey plastic with adhesive(cooling tape, smartphone)	BL	BL	BL	BL	BL
(119)	Black plastic with coppery metal(NFC FPC, smartphone)	BL	BL	BL	BL	BL
(120)	Black plastic with coppery metal(LTE antenna FPC, smartphone)	BL	BL	BL	BL	BL
(121)	Black plastic with coppery metal(GWB antenna FPC, smartphone)	BL	BL	BL	BL	BL
(122)	Black plastic(main PCB holder, smartphone)	BL	BL	BL	BL	BL
(123)	Black EVA with adhesive(pad, main PCB holder, smartphone)	BL	BL	BL	BL	BL
(124)	Metallic blue coated black plastic(SIM card tray, smartphone)	BL	BL	BL	BL	BL
(125)	Silvery metal(SIM card tray, smartphone)	BL	BL	BL	BL	---
(126)	Metallic blue plated silvery metal(volume button/power button, smartphone)	BL	BL	BL	BL	---
(127)	Black soft plastic(pad, volume button/power button, smartphone)	BL	BL	BL	BL	BL
(128)	White printed black coated orange plastic with coppery metal(volume button FPC, smartphone)	BL	BL	BL	BL	BL
(129)	Black plastic with adhesive(double sided tape, volume button FPC/power button FPC/flashlight FPC, smartphone)	BL	BL	BL	BL	BL
(130)	Clear plastic with adhesive(tape, switch, volume button FPC/power button FPC, smartphone)	BL	BL	BL	BL	BL
(131)	Black plastic(base, switch, volume button FPC/power button FPC, smartphone)	BL	BL	BL	BL	BL
(132)	Silvery metal(metal dome, switch, volume button FPC/power button FPC, smartphone)	BL	BL	BL	BL	---
(133)	Silvery metal(contact plate, switch, volume button FPC/power button FPC, smartphone)	BL	BL	BL	BL	---
(134)	Silvery metal(stiffening plate, volume button FPC, smartphone)	BL	BL	BL	BL	---
(135)	Silvery metal(volume button FPC holder/power button FPC holder, smartphone)	BL	BL	BL	BL	---
(136)	Silvery metal(stiffening plate, power button FPC holder, smartphone)	BL	BL	BL	BL	---
(137)	White printed black coated orange plastic with coppery metal(power button FPC holder, smartphone)	BL	BL	BL	BL	BL
(138)	Silvery blue coated black plastic(frame, smartphone)	BL	BL	BL	BL	BL

TEST REPORT

Report No.: **SZ1240313-12683E**

Date: April 19, 2024

Page 8 of 45

Seq No.	Tested Part(s)	Result				
		Pb	Cd	Hg	Cr	Br
(139)	Silvery metal(frame, smartphone)	BL	BL	BL	BL	---
(140)*1	Golden metal(nut, frame, smartphone)	OL (19251)	BL	BL	BL	---
(141)	Silvery metal(bayonet lock, frame, smartphone)	BL	BL	BL	BL	---
(142)	Coppery metal(cooling fin, frame, smartphone)	BL	BL	BL	BL	---
(143)	Bright black/grey plastic with adhesive(cooling tape, frame, smartphone)	BL	BL	BL	BL	BL
(144)	Silvery grey fabric/black foam with adhesive(pad, frame, smartphone)	BL	BL	BL	BL	BL
(145)	Black EVA with adhesive(fingerprint window pad, frame, smartphone)	BL	BL	BL	BL	BL
(146)	Black EVA with adhesive(front camera pad, frame, smartphone)	BL	BL	BL	BL	BL
(147)	Black soft plastic(microphone pad, frame, smartphone)	BL	BL	BL	BL	BL
(148)	Bright silvery grey plastic with adhesive(pad, frame, smartphone)	BL	BL	BL	BL	BL
(149)	Silvery grey plastic with adhesive(double adhesive tape, frame/screen, smartphone)	BL	BL	BL	BL	BL
(150)	Silvery grey fabric with adhesive(double adhesive tape, frame/vibrating motor, smartphone)	BL	BL	BL	BL	BL
(151)	Clear plastic with adhesive(double adhesive tape, frame, smartphone)	BL	BL	BL	BL	BL
(152)	Black plastic with adhesive(tape, frame, smartphone)	BL	BL	BL	BL	BL
(153)	Black EVA/fabric with adhesive(speaker dust gauze, frame, smartphone)	BL	BL	BL	BL	BL
(154)	Black fabric with adhesive(microphone dust gauze, frame, smartphone)	BL	BL	BL	BL	BL
(155)	Pink thermal grease(frame/main PCB, smartphone)	BL	BL	BL	BL	BL
(156)	Grey thermal grease(frame, smartphone)	BL	BL	BL	BL	BL
(157)	Clear plastic(light guide, frame, smartphone)	BL	BL	BL	BL	BL
(158)	Metallic blue/black coated clear plastic(trim strip, top, frame, smartphone)	BL	BL	BL	BL	BL
(159)	White printed black coated clear glass with glue(touch panel, smartphone)	BL	BL	BL	BL	BL
(160)	Translucent black plastic with adhesive(polaroid, screen, smartphone)	BL	BL	BL	BL	BL
(161)	Clear plastic with adhesive(film, screen, smartphone)	BL	BL	BL	BL	BL
(162)	Golden plastic with silvery powder(screen, smartphone)	BL	BL	BL	BL	BL
(163)	Silvery body(IC, screen, smartphone)	BL	BL	BL	BL	BL
(164)	White plastic with adhesive(pad, screen, smartphone)	BL	BL	BL	BL	BL
(165)	Clear plastic with adhesive(tape, pad, screen, smartphone)	BL	BL	BL	BL	BL
(166)	Coppery metal(foil, screen, smartphone)	BL	BL	BL	BL	---

TEST REPORT

Report No.: **SZ1240313-12683E**

Date: April 19, 2024

Page 9 of 45

Seq No.	Tested Part(s)	Result				
		Pb	Cd	Hg	Cr	Br
(167)	Deep grey soft plastic with adhesive(double sided tape, foil, screen, smartphone)	BL	BL	BL	BL	BL
(168)	Black plastic with adhesive(double sided tape, foil, screen, smartphone)	BL	BL	BL	BL	BL
(169)	Black plastic with adhesive(tape, screen FPC, smartphone)	BL	BL	BL	BL	BL
(170)	Silvery grey fabric with adhesive(tape, screen FPC, smartphone)	BL	BL	BL	BL	BL
(171)	Black EVA with adhesive(pad, screen FPC/battery FPC, smartphone)	BL	BL	BL	BL	BL
(172)	White printed black coated orange/green plastic with coppery metal(screen FPC, smartphone)	BL	BL	BL	BL	BL
(173)	Silvery metal(stiffening plate, screen FPC, smartphone)	BL	BL	BL	BL	---
(174)	Golden metal(pin, connector, screen FPC, smartphone)	BL	BL	BL	BL	---
(175)	Black plastic(pin holder, connector, screen FPC, smartphone)	BL	BL	BL	BL	BL
(176)	Black body(big IC, screen FPC, smartphone)	BL	BL	BL	BL	BL
(177)	Black body(small IC, screen FPC, smartphone)	BL	BL	BL	BL	BL
(178)	Black body(SMD diode, screen FPC, smartphone)	BL	BL	BL	BL	BL
(179)	Brown body(SMD capacitor, screen FPC, smartphone)	BL	BL	BL	BL	BL
(180)	Orange plastic with adhesive(tape, battery, smartphone)	BL	BL	BL	BL	BL
(181)	Black plastic with adhesive(tape, battery, smartphone)	BL	BL	BL	BL	BL
(182)	Yellow paper with adhesive(tape, battery, smartphone)	BL	BL	BL	BL	BL
(183)	White paper with adhesive(tape, battery, smartphone)	BL	BL	BL	BL	BL
(184)	Black printed white/silvery body(fuse, battery, smartphone)	BL	BL	BL	BL	BL
(185)	Silvery metal(connecting plate, battery, smartphone)	BL	BL	BL	BL	---
(186)	Silvery solder(battery FPC/battery PCB, smartphone)	BL	BL	BL	BL	---
(187)	White printed black plastic with coppery metal(battery FPC, smartphone)	BL	BL	BL	BL	BL
(188)	Red dry glue(battery FPC, smartphone)	BL	BL	BL	BL	BL
(189)	Black plastic(pin holder, connector, battery FPC, smartphone)	BL	BL	BL	BL	BL
(190)	Golden metal(pin, connector, battery FPC, smartphone)	BL	BL	BL	BL	---
(191)	Silvery metal(stiffening plate, battery FPC, smartphone)	BL	BL	BL	BL	---
(192)	White printed black coated beige plastic with coppery metal(battery PCB, smartphone)	BL	BL	BL	BL	BL
(193)	Black body(big IC, battery PCB, smartphone)	BL	BL	BL	BL	BL
(194)	Black body(small IC, battery PCB, smartphone)	BL	BL	BL	BL	BL
(195)	Black body(SMD resistor, battery FPC, smartphone)	BL	BL	BL	BL	BL

TEST REPORT

Report No.: **SZ1240313-12683E**

Date: April 19, 2024

Page 10 of 45

Seq No.	Tested Part(s)	Result				
		Pb	Cd	Hg	Cr	Br
(196)	Brown body(SMD capacitor, battery FPC, smartphone)	BL	BL	BL	BL	BL
(197)	Black dry glue(speaker box, smartphone)	BL	BL	BL	BL	BL
(198)	Black plastic(speaker box, smartphone)	BL	BL	BL	BL	BL
(199)	White fabric with adhesive(dust gauze, speaker box, smartphone)	BL	BL	BL	BL	BL
(200)	Black plastic(wire jacket, connecting cable, speaker/receiver, smartphone)	BL	BL	BL	BL	BL
(201)	Red plastic(wire jacket, connecting cable, speaker/receiver, smartphone)	BL	BL	BL	BL	BL
(202)	Silvery metal(wire core, connecting cable, speaker, smartphone)	BL	BL	BL	BL	---
(203)	Silvery solder(speaker, smartphone)	BL	BL	BL	BL	---
(204)	Silvery metal-terminal blocks, speaker, smartphone)	BL	BL	BL	BL	---
(205)	Black plastic(frame, speaker, smartphone)	BL	BL	BL	BL	BL
(206)	Silvery metal(frame, speaker, smartphone)	BL	BL	BL	BL	---
(207)	Clear plastic with red glue(vibrating diaphragm, speaker, smartphone)	BL	BL	BL	BL	BL
(208)	Silvery metal(vibrating plate, speaker, smartphone)	BL	BL	BL	BL	---
(209)	Coppery metal(coil, speaker, smartphone)	BL	BL	BL	BL	---
(210)	Silvery metal(magnet spacer, speaker, smartphone)	BL	BL	BL	BL	---
(211)	Silvery metal(magnet holder, speaker, smartphone)	BL	BL	BL	BL	---
(212)	Silvery magnet(speaker, smartphone)	BL	BL	BL	BL	BL
(213)	Orange plastic with adhesive(tape, receiver, smartphone)	BL	BL	BL	BL	BL
(214)	Silvery grey fabric with adhesive(tape, receiver/SUB PCB, smartphone)	BL	BL	BL	BL	BL
(215)	Silvery solder(receiver, smartphone)	BL	BL	BL	BL	---
(216)	White fabric with adhesive(dust gauze, receiver, smartphone)	BL	BL	BL	BL	BL
(217)	Black plastic with black dry glue(frame, receiver, smartphone)	BL	BL	BL	BL	BL
(218)	Silvery metal(frame, receiver, smartphone)	BL	BL	BL	BL	---
(219)	Silvery metal(pin, receiver, smartphone)	BL	BL	BL	BL	---
(220)	Clear plastic(vibrating diaphragm, receiver, smartphone)	BL	BL	BL	BL	BL
(221)	White plastic(vibrating sheet, receiver, smartphone)	BL	BL	BL	BL	BL
(222)	Coppery metal(coil, receiver, smartphone)	BL	BL	BL	BL	---
(223)	Silvery metal(magnet spacer, receiver, smartphone)	BL	BL	BL	BL	---
(224)	Silvery metal(magnet holder, receiver, smartphone)	BL	BL	BL	BL	---
(225)	Silvery magnet(receiver, smartphone)	BL	BL	BL	BL	BL

TEST REPORT

Report No.: **SZ1240313-12683E**

Date: April 19, 2024

Page 11 of 45

Seq No.	Tested Part(s)	Result				
		Pb	Cd	Hg	Cr	Br
(226)	Clear dry glue(vibrating motor FPC, smartphone)	BL	BL	BL	BL	BL
(227)	Black coated orange plastic with coppery metal(vibrating motor FPC, smartphone)	BL	BL	BL	BL	BL
(228)	Silvery solder(vibrating motor FPC, smartphone)	BL	BL	BL	BL	---
(229)	Silvery metal(stiffening plate, vibrating motor FPC, smartphone)	BL	BL	BL	BL	---
(230)	Black EVA with adhesive(pad, cover, vibrating motor, smartphone)	BL	BL	BL	BL	BL
(231)	Silvery metal(cover, vibrating motor, smartphone)	BL	BL	BL	BL	---
(232)	Silvery metal(base, vibrating motor, smartphone)	BL	BL	BL	BL	---
(233)	Silvery metal(brush, vibrating motor, smartphone)	BL	BL	BL	BL	---
(234)	Silvery magnet(vibrating motor, smartphone)	BL	BL	BL	BL	BL
(235)	Silvery metal(shaft, vibrating motor, smartphone)	BL	BL	BL	BL	---
(236)	Clear plastic(washer, shaft, vibrating motor, smartphone)	BL	BL	BL	BL	BL
(237)	Green coated beige plastic with coppery metal(commutator, rotor, vibrating motor, smartphone)	BL	BL	BL	BL	BL
(238)	White plastic(rotor, vibrating motor, smartphone)	BL	BL	BL	BL	BL
(239)	Coppery metal(coil, rotor, vibrating motor, smartphone)	BL	BL	BL	BL	---
(240)	Coppery metal(bearing, rotor, vibrating motor, smartphone)	BL	BL	BL	BL	---
(241)	Silvery metal(counter weight, rotor, vibrating motor, smartphone)	BL	BL	BL	BL	---
(242)	Black coated orange plastic with coppery metal(flashlight FPC, smartphone)	BL	BL	BL	BL	BL
(243)	Silvery metal(stiffening plate, flashlight FPC, smartphone)	BL	BL	BL	BL	---
(244)	Yellow body(SMD LED, flashlight FPC, smartphone)	BL	BL	BL	BL	BL
(245)	Black plastic with adhesive(tape, cover, big rear camera, smartphone)	BL	BL	BL	BL	BL
(246)	Silvery metal(cover, big rear camera, smartphone)	BL	BL	BL	BL	---
(247)	Silvery magnet(big rear camera, smartphone)	BL	BL	BL	BL	BL
(248)	Coppery metal(coil, big rear camera, smartphone)	BL	BL	BL	BL	---
(249)	Silvery metal(terminal blocks, big rear camera, smartphone)	BL	BL	BL	BL	---
(250)	Black plastic(base, big rear camera, smartphone)	BL	BL	BL	BL	BL
(251)	Black plastic(lens holder, big rear camera, smartphone)	BL	BL	BL	BL	BL
(252)	Clear plastic(lens, big rear camera, smartphone)	BL	BL	BL	BL	BL
(253)	Black plastic(washer, lens, big rear camera, smartphone)	BL	BL	BL	BL	BL
(254)	Clear blue glass(filter, big rear camera, smartphone)	BL	BL	BL	BL	BL

TEST REPORT

Report No.: **SZ1240313-12683E**

Date: April 19, 2024

Page 12 of 45

Seq No.	Tested Part(s)	Result				
		Pb	Cd	Hg	Cr	Br
(255)	Black EVA with adhesive(pad, rear camera FPC/front camera FPC, smartphone)	BL	BL	BL	BL	BL
(256)	White printed black coated orange plastic with coppery metal(big rear camera FPC, smartphone)	BL	BL	BL	BL	BL
(257)	Black plastic(pin holder, connector, big rear camera FPC, smartphone)	BL	BL	BL	BL	BL
(258)	Golden metal(pin, connector, big rear camera FPC, smartphone)	BL	BL	BL	BL	---
(259)	Iridescent black body(photosensitive IC, big rear camera FPC, smartphone)	BL	BL	BL	BL	BL
(260)	Black body(IC, big rear camera FPC, smartphone)	BL	BL	BL	BL	BL
(261)	Black body(SMD diode, big rear camera FPC, smartphone)	BL	BL	BL	BL	BL
(262)	Brown body(SMD capacitor, big rear camera FPC, smartphone)	BL	BL	BL	BL	BL
(263)	Silvery metal(cover, medium rear camera, smartphone)	BL	BL	BL	BL	---
(264)	Silvery magnet(medium rear camera, smartphone)	BL	BL	BL	BL	BL
(265)	Coppery metal(coil, medium rear camera, smartphone)	BL	BL	BL	BL	---
(266)	Black plastic(base, medium rear camera, smartphone)	BL	BL	BL	BL	BL
(267)	Black plastic(lens holder, medium rear camera, smartphone)	BL	BL	BL	BL	BL
(268)	Clear plastic(lens, medium rear camera, smartphone)	BL	BL	BL	BL	BL
(269)	Black plastic(washer, lens, medium rear camera, smartphone)	BL	BL	BL	BL	BL
(270)	Clear blue glass(filter, medium rear camera, smartphone)	BL	BL	BL	BL	BL
(271)	Black plastic(base, extra small rear camera, smartphone)	BL	BL	BL	BL	BL
(272)	Black plastic(lens holder, extra small rear camera, smartphone)	BL	BL	BL	BL	BL
(273)	Clear plastic(lens, extra small rear camera, smartphone)	BL	BL	BL	BL	BL
(274)	Clear glass(filter, extra small rear camera, smartphone)	BL	BL	BL	BL	BL
(275)	White printed black coated orange plastic with coppery metal(medium rear camera FPC/extra small rear camera FPC, smartphone)	BL	BL	BL	BL	BL
(276)	Silvery metal(stiffening plate, medium rear camera FPC/extra small rear camera FPC, smartphone)	BL	BL	BL	BL	---
(277)	Clear plastic with adhesive(double sided tape, medium rear camera FPC/extra small rear camera FPC, smartphone)	BL	BL	BL	BL	BL
(278)	Black plastic(pin holder, connector, medium rear camera FPC/extra small rear camera FPC/small rear camera FPC/front camera FPC, smartphone)	BL	BL	BL	BL	BL
(279)	Golden metal(pin, connector, medium rear camera FPC/extra small rear camera FPC/small rear camera FPC/front camera FPC, smartphone)	BL	BL	BL	BL	---
(280)	Iridescent black body(big photosensitive IC, medium rear camera FPC/extra small rear camera FPC, smartphone)	BL	BL	BL	BL	BL

TEST REPORT

Report No.: **SZ1240313-12683E**

Date: April 19, 2024

Page 13 of 45

Seq No.	Tested Part(s)	Result				
		Pb	Cd	Hg	Cr	Br
(281)	Iridescent black/green body(small photosensitive IC, medium rear camera FPC/extra small rear camera FPC, smartphone)	BL	BL	BL	BL	BL
(282)	Black body(SMD diode, medium rear camera FPC/extra small rear camera FPC, smartphone)	BL	BL	BL	BL	BL
(283)	Brown body(SMD capacitor, medium rear camera FPC/extra small rear camera FPC, smartphone)	BL	BL	BL	BL	BL
(284)	Black plastic(base, small rear camera, smartphone)	BL	BL	BL	BL	BL
(285)	Black plastic(lens holder, small rear camera, smartphone)	BL	BL	BL	BL	BL
(286)	Clear plastic(lens, small rear camera, smartphone)	BL	BL	BL	BL	BL
(287)	Black plastic(washer, lens, small rear camera, smartphone)	BL	BL	BL	BL	BL
(288)	Clear blue glass(filter, small rear camera, smartphone)	BL	BL	BL	BL	BL
(289)	White printed black coated orange plastic with coppery metal(small rear camera FPC, smartphone)	BL	BL	BL	BL	BL
(290)	Silvery grey plastic with adhesive(pad, small rear camera FPC, smartphone)	BL	BL	BL	BL	BL
(291)	Iridescent black body(photosensitive IC, small rear camera FPC, smartphone)	BL	BL	BL	BL	BL
(292)	Brown body(SMD capacitor, small rear camera FPC, smartphone)	BL	BL	BL	BL	BL
(293)	Black plastic(cover, fingerprint camera, smartphone)	BL	BL	BL	BL	BL
(294)	Clear plastic(lens, fingerprint camera, smartphone)	BL	BL	BL	BL	BL
(295)	Black plastic(washer, lens, fingerprint camera, smartphone)	BL	BL	BL	BL	BL
(296)	White printed black coated orange plastic with coppery metal(fingerprint camera FPC, smartphone)	BL	BL	BL	BL	BL
(297)	Silvery metal(stiffening plate, fingerprint camera FPC, smartphone)	BL	BL	BL	BL	---
(298)	Black EVA with adhesive(pad, fingerprint camera FPC, smartphone)	BL	BL	BL	BL	BL
(299)	Silvery grey fabric with adhesive(tape, fingerprint camera FPC, smartphone)	BL	BL	BL	BL	BL
(300)	Black plastic(pin holder, connector, fingerprint camera FPC, smartphone)	BL	BL	BL	BL	BL
(301)	Golden metal(pin, connector, fingerprint camera FPC, smartphone)	BL	BL	BL	BL	---
(302)	Iridescent body(photosensitive IC, fingerprint camera FPC, smartphone)	BL	BL	BL	BL	BL
(303)	Brown body(SMD capacitor, fingerprint camera FPC, smartphone)	BL	BL	BL	BL	BL
(304)	Black plastic(base, front camera, smartphone)	BL	BL	BL	BL	BL
(305)	Black plastic(lens holder, front camera, smartphone)	BL	BL	BL	BL	BL
(306)	Clear plastic(lens, front camera, smartphone)	BL	BL	BL	BL	BL
(307)	Black plastic(washer, lens, front camera, smartphone)	BL	BL	BL	BL	BL

TEST REPORT

Report No.: **SZ1240313-12683E**

Date: April 19, 2024

Page 14 of 45

Seq No.	Tested Part(s)	Result				
		Pb	Cd	Hg	Cr	Br
(308)	Black plated silvery metal(washer, lens, front camera, smartphone)	BL	BL	BL	BL	---
(309)	Clear blue glass(filter, front camera, smartphone)	BL	BL	BL	BL	BL
(310)	White printed orange/black plastic with coppery metal(front camera FPC, smartphone)	BL	BL	BL	BL	BL
(311)	Iridescent black body(IC, front camera FPC, smartphone)	BL	BL	BL	BL	BL
(312)	Brown body(SMD capacitor, front camera FPC, smartphone)	BL	BL	BL	BL	BL
(313)	Black soft plastic(sleeve, sensor, smartphone)	BL	BL	BL	BL	BL
(314)	Black/clear body(sensor, smartphone)	BL	BL	BL	BL	BL
(315)	White printed black coated orange plastic with coppery metal(sensor FPC, smartphone)	BL	BL	BL	BL	BL
(316)	Silvery metal(stiffening plate, sensor FPC, smartphone)	BL	BL	BL	BL	---
(317)	Black plastic(pin holder, connector, sensor FPC, smartphone)	BL	BL	BL	BL	BL
(318)	Golden metal(pin, connector, sensor FPC, smartphone)	BL	BL	BL	BL	---
(319)	Black EVA with adhesive(pad, sensor FPC/front camera FPC/main FPC, smartphone)	BL	BL	BL	BL	BL
(320)	White printed black coated orange plastic with coppery metal(main FPC, smartphone)	BL	BL	BL	BL	BL
(321)	Silvery metal(stiffening plate, main FPC, smartphone)	BL	BL	BL	BL	---
(322)	Black plastic(pin holder, connector, main FPC, smartphone)	BL	BL	BL	BL	BL
(323)	Golden metal(pin, connector, main FPC, smartphone)	BL	BL	BL	BL	---
(324)	Black plastic(cable jacket, antenna, smartphone)	BL	BL	BL	BL	BL
(325)	White plastic(wire jacket, cable, antenna, smartphone)	BL	BL	BL	BL	BL
(326)	Silvery metal(wire core, cable, antenna, smartphone)	BL	BL	BL	BL	---
(327)	Silvery metal(shielding net, cable, antenna, smartphone)	BL	BL	BL	BL	---
(328)	Silvery metal(cover, cable plug, antenna, smartphone)	BL	BL	BL	BL	---
(329)	Golden metal(contact plate, cable plug, antenna, smartphone)	BL	BL	BL	BL	---
(330)	Black plastic(insulator, plug, cable plug, antenna, smartphone)	BL	BL	BL	BL	BL
(331)*	White printed green coated beige plastic with coppery metal(SUB PCB, smartphone)	BL	BL	BL	BL	X
(332)	Silvery solder(SUB PCB, smartphone)	BL	BL	BL	BL	---
(333)	Silvery metal(contact plate, SUB PCB/main PCB, smartphone)	BL	BL	BL	BL	---
(334)	Silvery metal(cable clip, SUB PCB/main PCB, smartphone)	BL	BL	BL	BL	---

TEST REPORT

Report No.: **SZ1240313-12683E**

Date: April 19, 2024

Page 15 of 45

Seq No.	Tested Part(s)	Result				
		Pb	Cd	Hg	Cr	Br
(335)	Black EVA with adhesive(microphone pad, SUB PCB/main PCB, smartphone)	BL	BL	BL	BL	BL
(336)	Silvery grey foam with adhesive(pad, SUB PCB, smartphone)	BL	BL	BL	BL	BL
(337)	Black plastic with adhesive(tape, SUB PCB, smartphone)	BL	BL	BL	BL	BL
(338)	Black soft plastic(pad, SUB PCB, smartphone)	BL	BL	BL	BL	BL
(339)	Black dry glue(SUB PCB, smartphone)	BL	BL	BL	BL	BL
(340)	Silvery metal(cover, type-C socket, SUB PCB, smartphone)	BL	BL	BL	BL	---
(341)	Golden metal(pin, type-C socket, SUB PCB, smartphone)	BL	BL	BL	BL	---
(342)	Black plastic(insulator, type-C socket, SUB PCB, smartphone)	BL	BL	BL	BL	BL
(343)	Silvery metal(cover, SIM card slot, SUB PCB, smartphone)	BL	BL	BL	BL	---
(344)	Silvery metal(rod, SIM card slot, SUB PCB, smartphone)	BL	BL	BL	BL	---
(345)	Silvery metal(pin, SIM card slot, SUB PCB, smartphone)	BL	BL	BL	BL	---
(346)	Black plastic(pin holder, SIM card slot, SUB PCB, smartphone)	BL	BL	BL	BL	BL
(347)	Black plastic(pin holder, connector, SUB PCB/main PCB, smartphone)	BL	BL	BL	BL	BL
(348)	Golden metal(pin, connector, SUB PCB/main PCB, smartphone)	BL	BL	BL	BL	---
(349)	Golden metal(cover, antenna socket, SUB PCB/main PCB, smartphone)	BL	BL	BL	BL	---
(350)	Golden metal(pin, antenna socket, SUB PCB/main PCB, smartphone)	BL	BL	BL	BL	---
(351)	Black plastic(insulator, antenna socket, SUB PCB/main PCB, smartphone)	BL	BL	BL	BL	BL
(352)	Silvery body(SMD microphone, SUB PCB, smartphone)	BL	BL	BL	BL	BL
(353)	Black body(big IC, SUB PCB, smartphone)	BL	BL	BL	BL	BL
(354)	Black body(small IC, SUB PCB, smartphone)	BL	BL	BL	BL	BL
(355)	Black body(SMD diode, SUB PCB, smartphone)	BL	BL	BL	BL	BL
(356)	Black printed grey body(SMD filter, SUB PCB, smartphone)	BL	BL	BL	BL	BL
(357)	Brown body(SMD capacitor, SUB PCB, smartphone)	BL	BL	BL	BL	BL
(358)	Coppery metal with adhesive(cooling foil, main PCB/big rear camera, smartphone)	BL	BL	BL	BL	BL
(359)	Yellow coated silvery metal(shielding case, main PCB, smartphone)	BL	BL	BL	BL	BL
(360)	Silvery metal(shielding case, main PCB, smartphone)	BL	BL	BL	BL	---
(361)	Silvery solder(main PCB, smartphone)	BL	BL	BL	BL	---
(362)	Black coated beige plastic with coppery metal(main PCB, smartphone)	BL	BL	BL	BL	BL
(363)	Black EVA with adhesive(pad, main PCB, smartphone)	BL	BL	BL	BL	BL
(364)	Grey thermal grease(main PCB, smartphone)	BL	BL	BL	BL	BL

Bay Area Compliance Laboratories Corp. (Shenzhen)

5/F. (B-West), 6&7/F., The 3rd Phase of Wanli Industrial Building D, Shihua Road, Fubao Community, Fubao Subdistrict, Futian District, Shenzhen, Guangdong, China

Tel: +86-755-33320018 Fax: +86-755-33320008

QB-CH-R001 (V1.0)

TEST REPORT

Report No.: **SZ1240313-12683E**

Date: April 19, 2024

Page 16 of 45

Seq No.	Tested Part(s)	Result				
		Pb	Cd	Hg	Cr	Br
(365)	Golden plated silvery metal(big contact plate, main PCB, smartphone)	BL	BL	BL	BL	---
(366)	Silvery metal(hook, main PCB, smartphone)	BL	BL	BL	BL	---
(367)	Black plastic(pin holder, sensor connector/fingerprint camera, main PCB, smartphone)	BL	BL	BL	BL	BL
(368)	Golden metal(pin, sensor connector/fingerprint camera, main PCB, smartphone)	BL	BL	BL	BL	---
(369)	Black plastic(pin holder, big rear camera connector, main PCB, smartphone)	BL	BL	BL	BL	BL
(370)	Golden metal(pin, big rear camera connector, main PCB, smartphone)	BL	BL	BL	BL	---
(371)	Black plastic(pin holder, medium rear camera connector/small rear camera connector/extra rear camera connector/front camera connector, main PCB, smartphone)	BL	BL	BL	BL	BL
(372)	Golden metal(pin, medium rear camera connector/small rear camera connector/extra rear camera connector/front camera connector, main PCB, smartphone)	BL	BL	BL	BL	---
(373)	Black plastic(pin holder, screen connector, main PCB, smartphone)	BL	BL	BL	BL	BL
(374)	Golden metal(pin, screen connector, main PCB, smartphone)	BL	BL	BL	BL	---
(375)	Black plastic(pin holder, battery connector, main PCB, smartphone)	BL	BL	BL	BL	BL
(376)	Golden metal(pin, battery connector, main PCB, smartphone)	BL	BL	BL	BL	---
(377)	Silvery metal(cover, socket, main PCB, smartphone)	BL	BL	BL	BL	---
(378)	Golden metal(contact plate, socket, main PCB, smartphone)	BL	BL	BL	BL	---
(379)	Black plastic(insulator, socket, main PCB, smartphone)	BL	BL	BL	BL	BL
(380)	Black body(CPU, main PCB, smartphone)	BL	BL	BL	BL	BL
(381)	Black body(flash IC, main PCB, smartphone)	BL	BL	BL	BL	BL
(382)	Black body(memory IC, main PCB, smartphone)	BL	BL	BL	BL	BL
(383)	Black body(extra large IC, main PCB, smartphone)	BL	BL	BL	BL	BL
(384)	Black body(big IC, main PCB, smartphone)	BL	BL	BL	BL	BL
(385)	Black body(medium IC, main PCB, smartphone)	BL	BL	BL	BL	BL
(386)	Black body(small IC, main PCB, smartphone)	BL	BL	BL	BL	BL
(387)	Black body(extra small IC, main PCB, smartphone)	BL	BL	BL	BL	BL
(388)	Blue body(IC, main PCB, smartphone)	BL	BL	BL	BL	BL
(389)	Light blue body(IC, main PCB, smartphone)	BL	BL	BL	BL	BL
(390)	Silvery body(IC, main PCB, smartphone)	BL	BL	BL	BL	BL
(391)	Dark black body(IC, main PCB, smartphone)	BL	BL	BL	BL	BL

TEST REPORT

Report No.: **SZ1240313-12683E**

Date: April 19, 2024

Page 17 of 45

Seq No.	Tested Part(s)	Result				
		Pb	Cd	Hg	Cr	Br
(392)	Red printed grey body(IC, main PCB, smartphone)	BL	BL	BL	BL	BL
(393)	Silvery body(big crystal oscillator, main PCB, smartphone)	BL	BL	BL	BL	BL
(394)	Silvery body(small crystal oscillator, main PCB, smartphone)	BL	BL	BL	BL	BL
(395)	Golden body(SMD microphone, main PCB, smartphone)	BL	BL	BL	BL	BL
(396)	Black body(SMD diode, main PCB, smartphone)	BL	BL	BL	BL	BL
(397)	Tan body(big SMD inductor, main PCB, smartphone)	BL	BL	BL	BL	BL
(398)	Tan body(small SMD inductor, main PCB, smartphone)	BL	BL	BL	BL	BL
(399)	Grey body(big SMD inductor, main PCB, smartphone)	BL	BL	BL	BL	BL
(400)	Grey body(small SMD inductor, main PCB, smartphone)	BL	BL	BL	BL	BL
(401)	Black/white body(big SMD resistor, main PCB, smartphone)	BL	BL	BL	BL	BL
(402)	Black body(small SMD resistor, main PCB, smartphone)	BL	BL	BL	BL	BL
(403)	Brown body(SMD capacitor, main PCB, smartphone)	BL	BL	BL	BL	BL
(404)	Clear plastic with adhesive(puller, battery, smartphone)	BL	BL	BL	BL	BL

Note:

--- = Not Applicable.

* = Screening by XRF and detected by chemical method. The test result of chemical method please refer to next pages.

*¹ = As claimed by the material declaration submitted by the client, the materials of the sample No. 140 is copper alloy. And according to RoHS directive 2011/65/EU and its amendments, Lead is exempted as an alloying element in Copper containing up to 4% (4000ppm) by weight.

*² = As claimed by the material declaration submitted by the client, the materials of the sample No. 91,93 are high melting temperature type solders. And according to RoHS directive 2011/65/EU and its amendments, Lead is exempted in high melting temperature type solders (i.e. lead-based alloys containing 85 % by weight or more lead).

*³ = As claimed by the material declaration submitted by the client, the materials of the sample No. 41,96 are ceramic. And according to RoHS directive 2011/65/EU and its amendments, Lead is exempted in electronic ceramic parts (e.g. piezoelectronic devices).

TEST REPORT

Report No.: **SZ1240313-12683E**

Date: April 19, 2024

Page 18 of 45

Remark:

i Result were obtained by XRF for primary screening, and further chemical testing by ICP (for Cd, Pb, Hg), UV-Vis (for Cr(VI)) and GC-MS (for PBBs, PBDEs) are recommended to be performed, if the concentration exceeds the below warning value according to IEC62321-3-1:2013.

Element	Unit	Polymers	Metal	Composite Material
Cd	mg/kg	BL≤70-3σ<X <130+3σ≤OL	BL≤70-3σ<X <130+3σ≤OL	BL≤50-3σ<X <150+3σ≤OL
Pb	mg/kg	BL≤700-3σ<X <1300+3σ≤OL	BL≤700-3σ<X <1300+3σ≤OL	BL≤500-3σ<X <1500+3σ≤OL
Hg	mg/kg	BL≤700-3σ<X <1300+3σ≤OL	BL≤700-3σ<X <1300+3σ≤OL	BL≤500-3σ<X <1500+3σ≤OL
Cr	mg/kg	BL≤700-3σ<X	BL≤700-3σ<X	BL≤500-3σ<X
Br	mg/kg	BL≤300-3σ<X	--	BL≤250-3σ<X

Note:

BL = Below Limit

OL = Over Limit

IN/X = Inconclusive (questionable, need further chemical analysis)

ii The XRF screening test for RoHS elements – The reading may be different to the actual content in the sample be of non-uniformity composition.

iii The maximum permissible limit is quoted from the RoHS directive 2011/65/EU:

RoHS Restricted Substances	Maximum Concentration Value (mg/kg) (by weight in homogenous materials)
Cadmium (Cd)	100
Lead (Pb)	1000
Mercury (Hg)	1000
Hexavalent Chromium (Cr(VI))	1000
Polybrominated biphenyls (PBBs)	1000
Polybrominated diphenylethers (PBDEs)	1000

Disclaimers:

This XRF Screening report is for reference purposes only. The applicant shall make its/his/her own judgment as to whether the information provided in this XRF screening report is sufficient for its/his/her purposes.

The result shown in this XRF screening report will differ based on various factors, including but not limited to, the sample size, thickness, area, surface flatness, equipment parameters and matrix effect (e.g. plastic, rubber, metal, glass, ceramic etc.). Further wet chemical pre-treatment with relevant chemical equipment analysis are required to obtain quantitative data.

TEST REPORT

Report No.: SZ1240313-12683E

Date: April 19, 2024

Page 19 of 45

A.2 Wet Chemical Testing

A.2.1 PBBs & PBDEs content

Test method: IEC 62321-6:2015

Item	Unit	MDL	Result					Limit
			(24)	(45)	(59)	(98)	(331)	
Monobromobiphenyl (MonoBB)	mg/kg	50	N.D.	N.D.	N.D.	N.D.	N.D.	-
Dibromobiphenyl(DiBB)	mg/kg	50	N.D.	N.D.	N.D.	N.D.	N.D.	-
Tribromobiphenyl(TriBB)	mg/kg	50	N.D.	N.D.	N.D.	N.D.	N.D.	-
Tetrabromobiphenyl(TetraBB)	mg/kg	50	N.D.	N.D.	N.D.	N.D.	N.D.	-
Pentabromobiphenyl(PentaBB)	mg/kg	50	N.D.	N.D.	N.D.	N.D.	N.D.	-
Hexabromobiphenyl(HexaBB)	mg/kg	50	N.D.	N.D.	N.D.	N.D.	N.D.	-
Heptabromobiphenyl (HeptaBB)	mg/kg	50	N.D.	N.D.	N.D.	N.D.	N.D.	-
Octabromobiphenyl(OctaBB)	mg/kg	50	N.D.	N.D.	N.D.	N.D.	N.D.	-
Nonabromobiphenyl(NonaBB)	mg/kg	50	N.D.	N.D.	N.D.	N.D.	N.D.	-
Decabromobiphenyl(DecaBB)	mg/kg	50	N.D.	N.D.	N.D.	N.D.	N.D.	-
Monobromodiphenyl ether (MonoBDE)	mg/kg	50	N.D.	N.D.	N.D.	N.D.	N.D.	-
Dibromodiphenyl ether (DiBDE)	mg/kg	50	N.D.	N.D.	N.D.	N.D.	N.D.	-
Tribromodiphenyl ether (TriBDE)	mg/kg	50	N.D.	N.D.	N.D.	N.D.	N.D.	-
Tetrabromodiphenyl ether (TetraBDE)	mg/kg	50	N.D.	N.D.	N.D.	N.D.	N.D.	-
Pentabromodiphenyl ether (PentaBDE)	mg/kg	50	N.D.	N.D.	N.D.	N.D.	N.D.	-
Hexabromodiphenyl ether (HexaBDE)	mg/kg	50	N.D.	N.D.	N.D.	N.D.	N.D.	-
Heptabromodiphenyl ether (HeptaBDE)	mg/kg	50	N.D.	N.D.	N.D.	N.D.	N.D.	-
Octabromodiphenyl ether (OctaBDE)	mg/kg	50	N.D.	N.D.	N.D.	N.D.	N.D.	-
Nonabromodiphenyl ether (NonaBDE)	mg/kg	50	N.D.	N.D.	N.D.	N.D.	N.D.	-
Decabromodiphenyl ether (DecaBDE)	mg/kg	50	N.D.	N.D.	N.D.	N.D.	N.D.	-

TEST REPORT

Report No.: SZ1240313-12683E

Date: April 19, 2024

Page 20 of 45

Item	Unit	MDL	Result					Limit
			(24)	(45)	(59)	(98)	(331)	
sum of MonoBDE,DiBDE,TriBDE,TetraBDE,PentaBDE,HexaBDE,HeptaBDE,OctaBDE,NonaBDE,DecaBDE	mg/kg	-	/	/	/	/	/	1000
sum of MonoBB,DiBB,TriBB,TetraBB,PentaBB,HexaBB,HeptaBB,OctaBB,NonaBB,DecaBB	mg/kg	-	/	/	/	/	/	1000
Conclusion	/	/	Pass	Pass	Pass	Pass	Pass	/

A.3 Phthalates(DBP, BBP, DEHP, DIBP)content

Test method: IEC 62321-8:2017

Item	Unit	MDL	Result						Limit
			(1)	(2)	(3)	(4)+(5)+(6)	(8)	(12)+(13)+(14)	
Dibutyl Phthalate(DBP)	mg/kg	30	N.D.	N.D.	N.D.	N.D.	N.D.	N.D.	1000
Benzyl Butyl Phthalate(BBP)	mg/kg	30	N.D.	N.D.	N.D.	N.D.	N.D.	N.D.	1000
Bis-(2-ethylhexyl) Phthalate (DEHP)	mg/kg	30	N.D.	N.D.	N.D.	N.D.	N.D.	N.D.	1000
Diisobutyl phthalate(DIBP)	mg/kg	30	N.D.	N.D.	N.D.	N.D.	N.D.	N.D.	1000
Conclusion	/	/	Pass	Pass	Pass	Pass	Pass	Pass	/

Item	Unit	MDL	Result						Limit
			(15)+(24)+(36)	(18)+(35)+(43)	(19)+(26)+(27)	(23)+(52)	(28)+(29)+(42)	(30)+(31)	
Dibutyl Phthalate(DBP)	mg/kg	30	N.D.	N.D.	N.D.	N.D.	N.D.	N.D.	1000
Benzyl Butyl Phthalate(BBP)	mg/kg	30	N.D.	N.D.	N.D.	N.D.	N.D.	N.D.	1000
Bis-(2-ethylhexyl) Phthalate (DEHP)	mg/kg	30	N.D.	N.D.	N.D.	N.D.	N.D.	N.D.	1000
Diisobutyl phthalate(DIBP)	mg/kg	30	N.D.	N.D.	N.D.	N.D.	N.D.	N.D.	1000
Conclusion	/	/	Pass	Pass	Pass	Pass	Pass	Pass	/

TEST REPORT

Report No.: SZ1240313-12683E

Date: April 19, 2024

Page 21 of 45

Item	Unit	MDL	Result						Limit
			(32)+(33)	(39)+(47)+(48)	(40)+(77)+(79)	(44)+(49)	(45)+(59)+(98)	(56)+(57)	
Dibutyl Phthalate(DBP)	mg/kg	30	N.D.	N.D.	N.D.	N.D.	N.D.	N.D.	1000
Benzyl Butyl Phthalate(BBP)	mg/kg	30	N.D.	N.D.	N.D.	N.D.	N.D.	N.D.	1000
Bis-(2-ethylhexyl) Phthalate (DEHP)	mg/kg	30	N.D.	64	N.D.	N.D.	N.D.	N.D.	1000
Diisobutyl phthalate(DIBP)	mg/kg	30	N.D.	N.D.	N.D.	N.D.	N.D.	N.D.	1000
Conclusion	/	/	Pass	Pass	Pass	Pass	Pass	Pass	/

Item	Unit	MDL	Result						Limit
			(63)+(69)+(70)	(64)+(67)+(68)	(65)+(66)	(71)+(76)+(78)	(72)	(80)+(81)+(82)	
Dibutyl Phthalate(DBP)	mg/kg	30	N.D.	N.D.	N.D.	N.D.	N.D.	N.D.	1000
Benzyl Butyl Phthalate(BBP)	mg/kg	30	N.D.	N.D.	N.D.	N.D.	N.D.	N.D.	1000
Bis-(2-ethylhexyl) Phthalate (DEHP)	mg/kg	30	N.D.	96	N.D.	N.D.	N.D.	N.D.	1000
Diisobutyl phthalate(DIBP)	mg/kg	30	N.D.	N.D.	N.D.	N.D.	N.D.	N.D.	1000
Conclusion	/	/	Pass	Pass	Pass	Pass	Pass	Pass	/

Item	Unit	MDL	Result						Limit
			(83)+(102)	(85)+(86)+(87)	(88)+(89)+(90)	(92)+(94)	(95)+(103)	(106)+(109)+(122)	
Dibutyl Phthalate(DBP)	mg/kg	30	N.D.	N.D.	N.D.	N.D.	N.D.	N.D.	1000
Benzyl Butyl Phthalate(BBP)	mg/kg	30	N.D.	N.D.	N.D.	N.D.	N.D.	N.D.	1000
Bis-(2-ethylhexyl) Phthalate (DEHP)	mg/kg	30	N.D.	N.D.	N.D.	N.D.	N.D.	N.D.	1000
Diisobutyl phthalate(DIBP)	mg/kg	30	N.D.	N.D.	N.D.	N.D.	N.D.	N.D.	1000
Conclusion	/	/	Pass	Pass	Pass	Pass	Pass	Pass	/

Item	Unit	MDL	Result						Limit
			(107)	(110)+(111)+(112)	(113)+(159)	(114)+(115)+(118)	(119)+(120)+(121)	(123)+(127)+(129)	
Dibutyl Phthalate(DBP)	mg/kg	30	N.D.	N.D.	N.D.	N.D.	N.D.	N.D.	1000
Benzyl Butyl Phthalate(BBP)	mg/kg	30	N.D.	N.D.	N.D.	N.D.	N.D.	N.D.	1000
Bis-(2-ethylhexyl) Phthalate (DEHP)	mg/kg	30	N.D.	106	N.D.	N.D.	N.D.	N.D.	1000
Diisobutyl phthalate(DIBP)	mg/kg	30	N.D.	N.D.	N.D.	N.D.	N.D.	N.D.	1000
Conclusion	/	/	Pass	Pass	Pass	Pass	Pass	Pass	/

Bay Area Compliance Laboratories Corp. (Shenzhen)

5/F. (B-West), 6&7/F., The 3rd Phase of Wanli Industrial Building D, Shihua Road, Fubao Community, Fubao Subdistrict, Futian District, Shenzhen, Guangdong, China

QB-CH-R001 (V1.0)

Tel: +86-755-33320018 Fax: +86-755-33320008

TEST REPORT

Report No.: SZ1240313-12683E

Date: April 19, 2024

Page 22 of 45

Item	Unit	MDL	Result						Limit
			(124)+(138) +(158)	(128)+(137) +(172)	(130)+(207) +(217)	(131)+(157) +(162)	(143)+(144) +(147)	(145)+(146) +(153)	
Dibutyl Phthalate(DBP)	mg/kg	30	N.D.	N.D.	N.D.	N.D.	N.D.	N.D.	1000
Benzyl Butyl Phthalate(BBP)	mg/kg	30	N.D.	N.D.	N.D.	N.D.	N.D.	N.D.	1000
Bis-(2-ethylhexyl) Phthalate (DEHP)	mg/kg	30	N.D.	N.D.	N.D.	N.D.	N.D.	35	1000
Diisobutyl phthalate(DIBP)	mg/kg	30	N.D.	N.D.	N.D.	N.D.	N.D.	N.D.	1000
Conclusion	/	/	Pass	Pass	Pass	Pass	Pass	Pass	/

Item	Unit	MDL	Result						Limit
			(148)+(149) +(151)	(150)+(154) +(170)	(152)+(160) +(161)	(155)+(156) +(364)	(163)+(176) +(177)	(164)+(165) +(167)	
Dibutyl Phthalate(DBP)	mg/kg	30	N.D.	N.D.	N.D.	N.D.	N.D.	N.D.	1000
Benzyl Butyl Phthalate(BBP)	mg/kg	30	N.D.	N.D.	N.D.	N.D.	N.D.	N.D.	1000
Bis-(2-ethylhexyl) Phthalate (DEHP)	mg/kg	30	N.D.	N.D.	N.D.	N.D.	N.D.	43	1000
Diisobutyl phthalate(DIBP)	mg/kg	30	N.D.	N.D.	N.D.	N.D.	N.D.	N.D.	1000
Conclusion	/	/	Pass	Pass	Pass	Pass	Pass	Pass	/

Item	Unit	MDL	Result						Limit
			(168)+(169) +(171)	(175)+(189) +(198)	(178)+(184) +(193)	(180)+(181)	(182)+(183)	(187)+(192) +(227)	
Dibutyl Phthalate(DBP)	mg/kg	30	N.D.	N.D.	N.D.	160	N.D.	N.D.	1000
Benzyl Butyl Phthalate(BBP)	mg/kg	30	N.D.	N.D.	N.D.	N.D.	N.D.	N.D.	1000
Bis-(2-ethylhexyl) Phthalate (DEHP)	mg/kg	30	N.D.	N.D.	N.D.	N.D.	N.D.	N.D.	1000
Diisobutyl phthalate(DIBP)	mg/kg	30	N.D.	N.D.	N.D.	N.D.	N.D.	N.D.	1000
Conclusion	/	/	Pass	Pass	Pass	Pass	Pass	Pass	/

Item	Unit	MDL	Result						Limit
			(188)+(197) +(226)	(194)+(244) +(259)	(199)+(214)	(200)+(201)	(205)+(220) +(221)	(213)+(230) +(245)	
Dibutyl Phthalate(DBP)	mg/kg	30	N.D.	N.D.	N.D.	N.D.	N.D.	N.D.	1000
Benzyl Butyl Phthalate(BBP)	mg/kg	30	N.D.	N.D.	N.D.	N.D.	N.D.	N.D.	1000
Bis-(2-ethylhexyl) Phthalate (DEHP)	mg/kg	30	N.D.	N.D.	N.D.	40	N.D.	N.D.	1000
Diisobutyl phthalate(DIBP)	mg/kg	30	N.D.	N.D.	N.D.	N.D.	N.D.	N.D.	1000
Conclusion	/	/	Pass	Pass	Pass	Pass	Pass	Pass	/

Bay Area Compliance Laboratories Corp. (Shenzhen)

5/F. (B-West), 6&7/F., The 3rd Phase of Wanli Industrial Building D, Shihua Road, Fubao Community, Fubao Subdistrict, Futian District, Shenzhen, Guangdong, China

QB-CH-R001 (V1.0)

Tel: +86-755-33320018 Fax: +86-755-33320008

TEST REPORT

Report No.: SZ1240313-12683E

Date: April 19, 2024

Page 23 of 45

Item	Unit	MDL	Result						Limit
			(216)+(299)	(236)+(237) +(238)	(242)+(256) +(275)	(250)+(251) +(252)	(253)+(257) +(266)	(255)+(277) +(290)	
Dibutyl Phthalate(DBP)	mg/kg	30	N.D.	N.D.	N.D.	N.D.	N.D.	N.D.	1000
Benzyl Butyl Phthalate(BBP)	mg/kg	30	N.D.	N.D.	N.D.	N.D.	N.D.	N.D.	1000
Bis-(2-ethylhexyl) Phthalate (DEHP)	mg/kg	30	N.D.	N.D.	N.D.	N.D.	N.D.	N.D.	1000
Diisobutyl phthalate(DIBP)	mg/kg	30	N.D.	N.D.	N.D.	N.D.	N.D.	N.D.	1000
Conclusion	/	/	Pass	Pass	Pass	Pass	Pass	Pass	/

Item	Unit	MDL	Result						Limit
			(260)+(261) +(280)	(267)+(268) +(269)	(271)+(272) +(273)	(278)+(284) +(285)	(281)+(282) +(291)	(286)+(287) +(293)	
Dibutyl Phthalate(DBP)	mg/kg	30	N.D.	N.D.	N.D.	N.D.	N.D.	N.D.	1000
Benzyl Butyl Phthalate(BBP)	mg/kg	30	N.D.	N.D.	N.D.	N.D.	N.D.	N.D.	1000
Bis-(2-ethylhexyl) Phthalate (DEHP)	mg/kg	30	N.D.	N.D.	N.D.	N.D.	N.D.	N.D.	1000
Diisobutyl phthalate(DIBP)	mg/kg	30	N.D.	N.D.	N.D.	N.D.	N.D.	N.D.	1000
Conclusion	/	/	Pass	Pass	Pass	Pass	Pass	Pass	/

Item	Unit	MDL	Result						Limit
			(289)+(296) +(310)	(294)+(295) +(300)	(298)+(313) +(319)	(302)+(311) +(314)	(304)+(305) +(306)	(307)+(317) +(322)	
Dibutyl Phthalate(DBP)	mg/kg	30	N.D.	N.D.	N.D.	N.D.	N.D.	N.D.	1000
Benzyl Butyl Phthalate(BBP)	mg/kg	30	N.D.	N.D.	N.D.	N.D.	N.D.	N.D.	1000
Bis-(2-ethylhexyl) Phthalate (DEHP)	mg/kg	30	N.D.	N.D.	N.D.	N.D.	N.D.	N.D.	1000
Diisobutyl phthalate(DIBP)	mg/kg	30	N.D.	N.D.	N.D.	N.D.	N.D.	N.D.	1000
Conclusion	/	/	Pass	Pass	Pass	Pass	Pass	Pass	/

Item	Unit	MDL	Result						Limit
			(315)+(320)	(324)+(325)	(330)+(342) +(346)	(331)+(362)	(335)+(336) +(363)	(337)+(338) +(339)	
Dibutyl Phthalate(DBP)	mg/kg	30	N.D.	N.D.	N.D.	N.D.	N.D.	N.D.	1000
Benzyl Butyl Phthalate(BBP)	mg/kg	30	N.D.	N.D.	N.D.	N.D.	N.D.	N.D.	1000
Bis-(2-ethylhexyl) Phthalate (DEHP)	mg/kg	30	N.D.	N.D.	N.D.	N.D.	N.D.	N.D.	1000
Diisobutyl phthalate(DIBP)	mg/kg	30	N.D.	N.D.	N.D.	N.D.	N.D.	N.D.	1000
Conclusion	/	/	Pass	Pass	Pass	Pass	Pass	Pass	/

Bay Area Compliance Laboratories Corp. (Shenzhen)

5/F. (B-West), 6&7/F., The 3rd Phase of Wanli Industrial Building D, Shihua Road, Fubao Community, Fubao Subdistrict, Futian District, Shenzhen, Guangdong, China

QB-CH-R001 (V1.0)

Tel: +86-755-33320018 Fax: +86-755-33320008

TEST REPORT

Report No.: SZ1240313-12683E

Date: April 19, 2024

Page 24 of 45

Item	Unit	MDL	Result						Limit
			(347)+(351) +(367)	(352)+(353) +(354)	(355)+(356)	(358)+(359)	(369)+(371) +(373)	(375)+(379)	
Dibutyl Phthalate(DBP)	mg/kg	30	N.D.	N.D.	N.D.	N.D.	N.D.	N.D.	1000
Benzyl Butyl Phthalate(BBP)	mg/kg	30	N.D.	N.D.	N.D.	N.D.	N.D.	N.D.	1000
Bis-(2-ethylhexyl) Phthalate (DEHP)	mg/kg	30	N.D.	N.D.	N.D.	N.D.	N.D.	N.D.	1000
Diisobutyl phthalate(DIBP)	mg/kg	30	N.D.	N.D.	N.D.	N.D.	N.D.	N.D.	1000
Conclusion	/	/	Pass	Pass	Pass	Pass	Pass	Pass	/

Item	Unit	MDL	Result				Limit
			(380)+(381)+(382)	(383)+(384)+(385)	(386)+(387)+(388)	(389)+(390)+(391)	
Dibutyl Phthalate(DBP)	mg/kg	30	N.D.	N.D.	N.D.	N.D.	1000
Benzyl Butyl Phthalate(BBP)	mg/kg	30	N.D.	N.D.	N.D.	N.D.	1000
Bis-(2-ethylhexyl) Phthalate (DEHP)	mg/kg	30	N.D.	N.D.	N.D.	N.D.	1000
Diisobutyl phthalate(DIBP)	mg/kg	30	N.D.	N.D.	N.D.	N.D.	1000
Conclusion	/	/	Pass	Pass	Pass	Pass	/

Item	Unit	MDL	Result			Limit
			(392)+(393)+(394)	(395)+(396)	(404)	
Dibutyl Phthalate(DBP)	mg/kg	30	N.D.	N.D.	N.D.	1000
Benzyl Butyl Phthalate(BBP)	mg/kg	30	N.D.	N.D.	N.D.	1000
Bis-(2-ethylhexyl) Phthalate (DEHP)	mg/kg	30	N.D.	N.D.	N.D.	1000
Diisobutyl phthalate(DIBP)	mg/kg	30	N.D.	N.D.	N.D.	1000
Conclusion	/	/	Pass	Pass	Pass	/

Note:

- N.D.= Not Detected or less than MDL
- MDL = Method Detection Limit
- "+" = Composite testing.
- The Result less than MDL are not taken into account while calculating the sum contents.

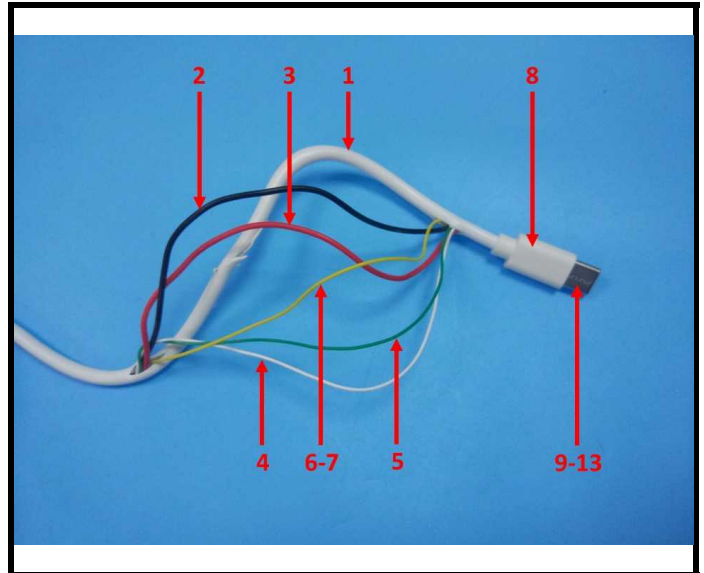
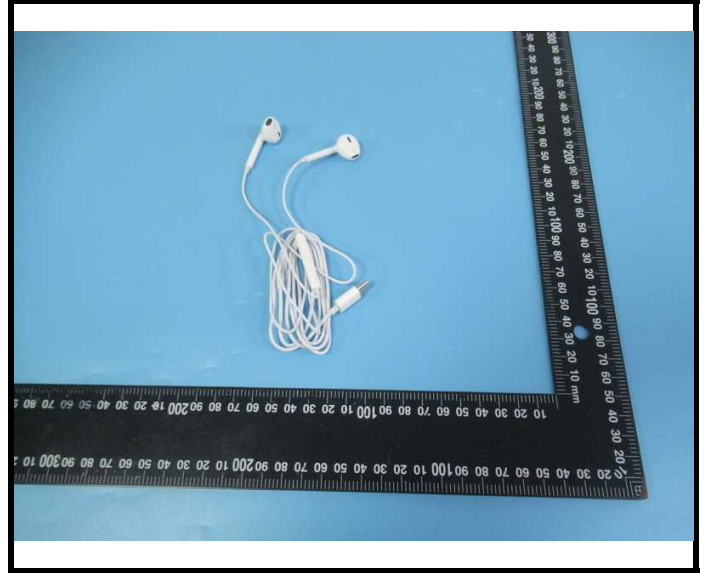
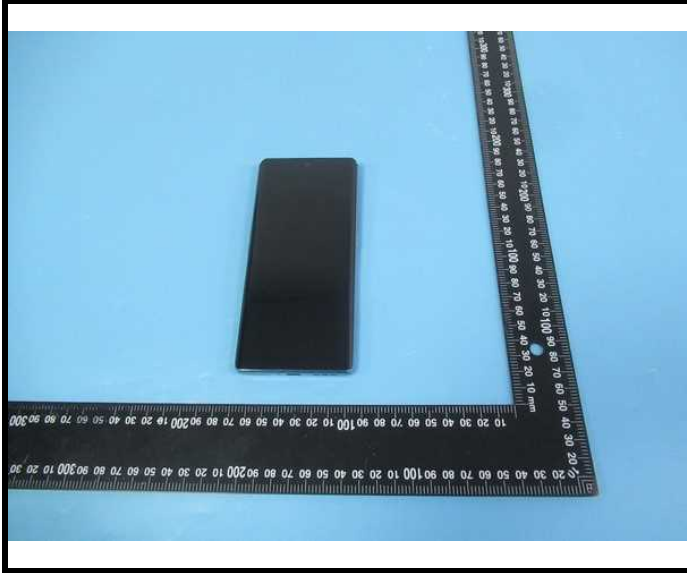
TEST REPORT

Report No.: SZ1240313-12683E

Date: April 19, 2024

Page 25 of 45

Photograph of Sample

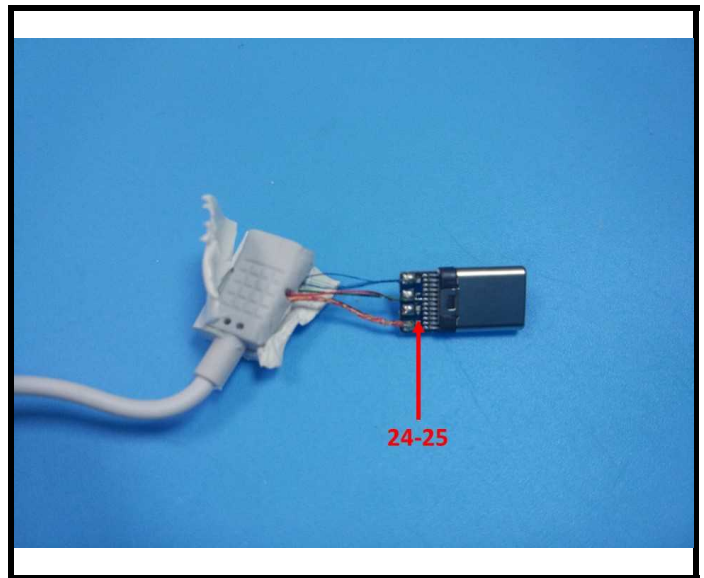
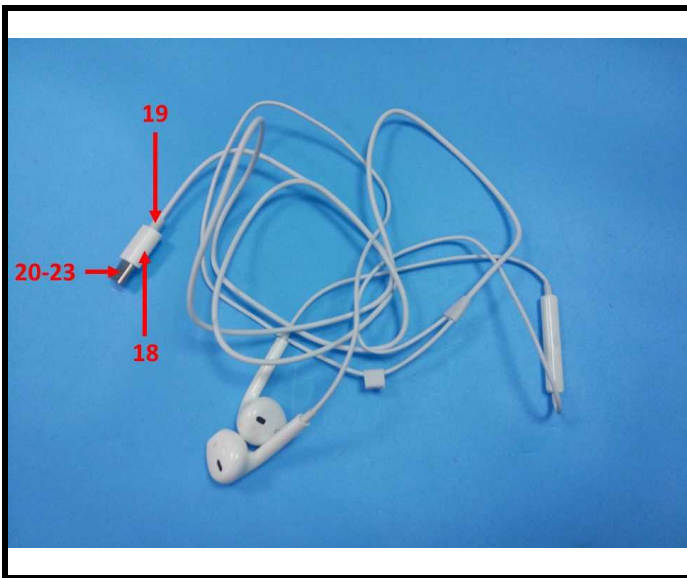
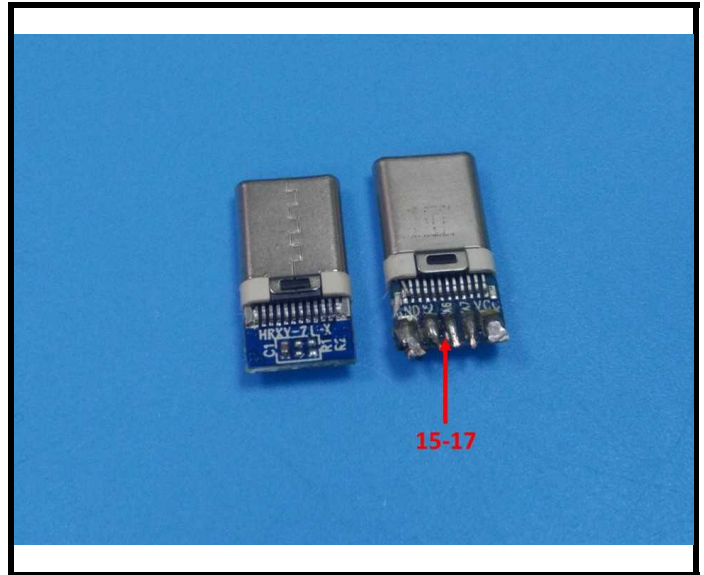
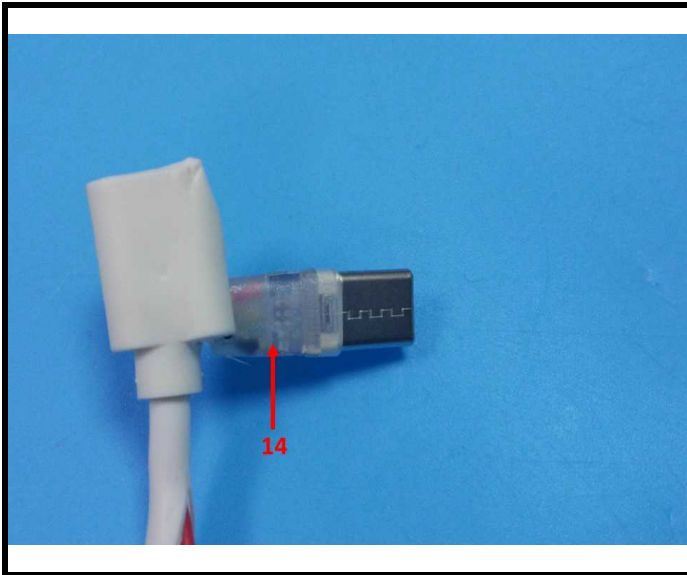


TEST REPORT

Report No.: SZ1240313-12683E

Date: April 19, 2024

Page 26 of 45

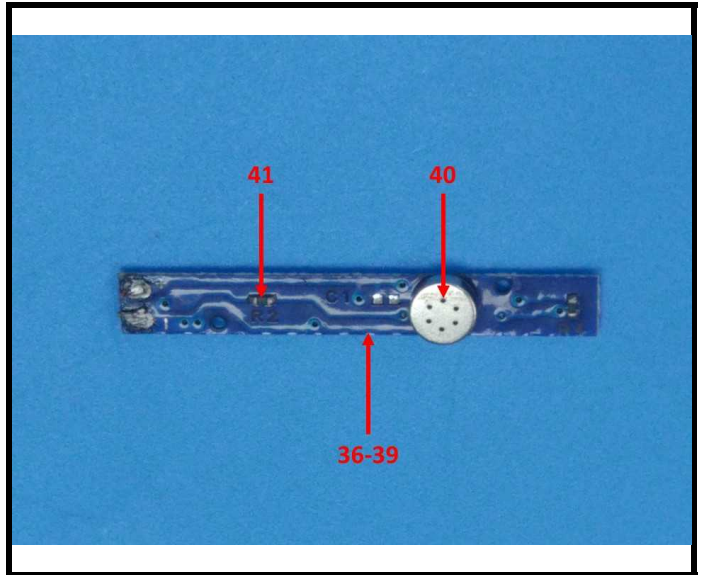
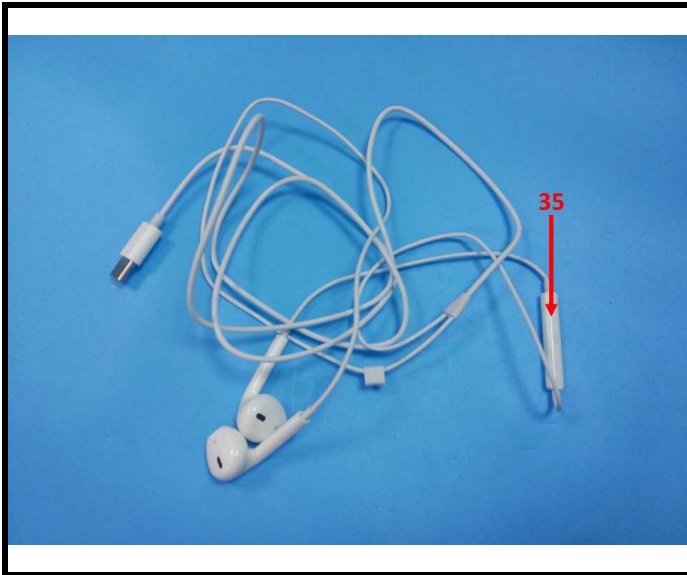
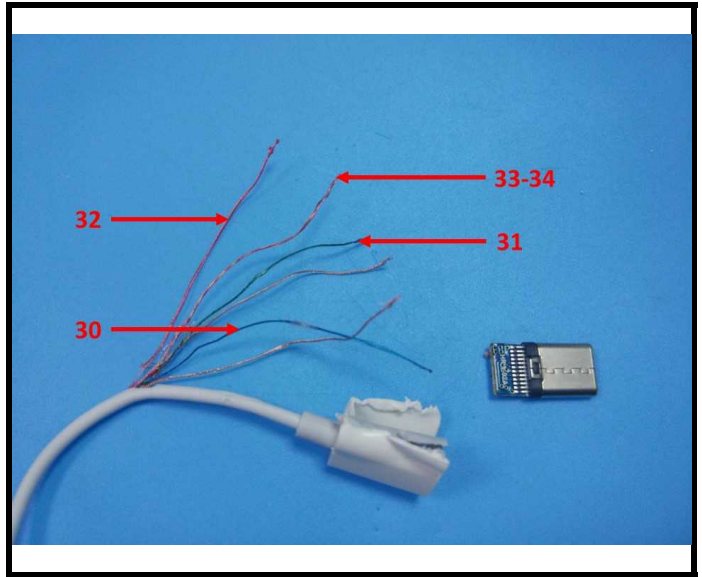
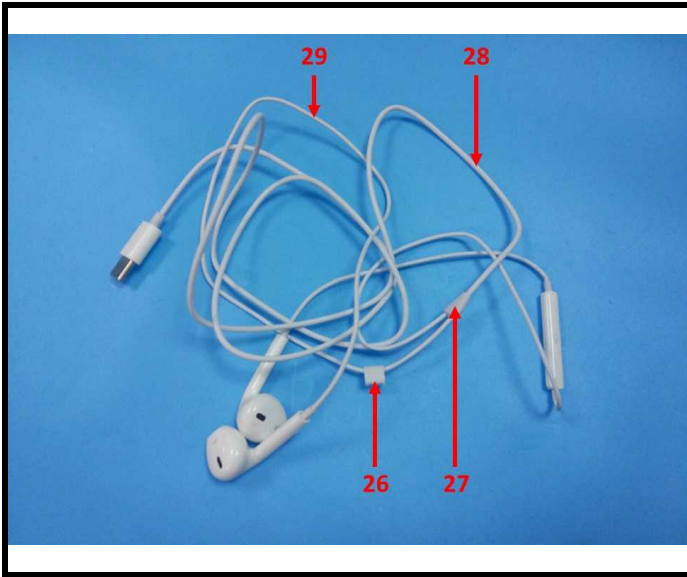


TEST REPORT

Report No.: SZ1240313-12683E

Date: April 19, 2024

Page 27 of 45

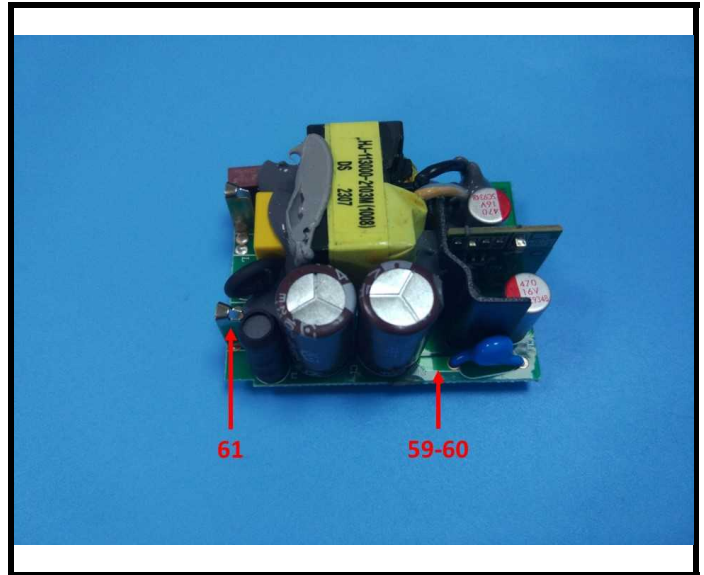
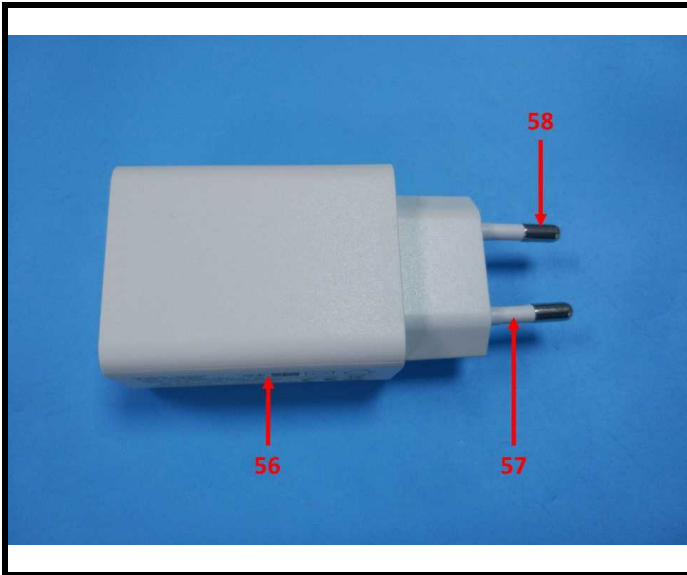
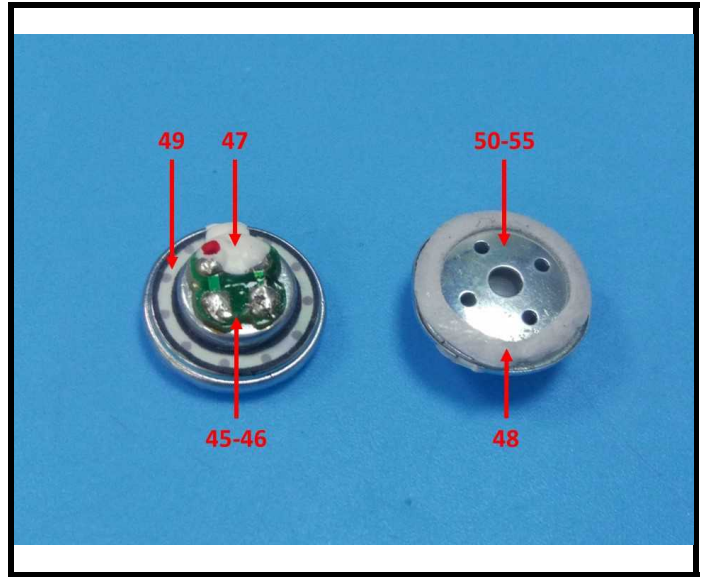
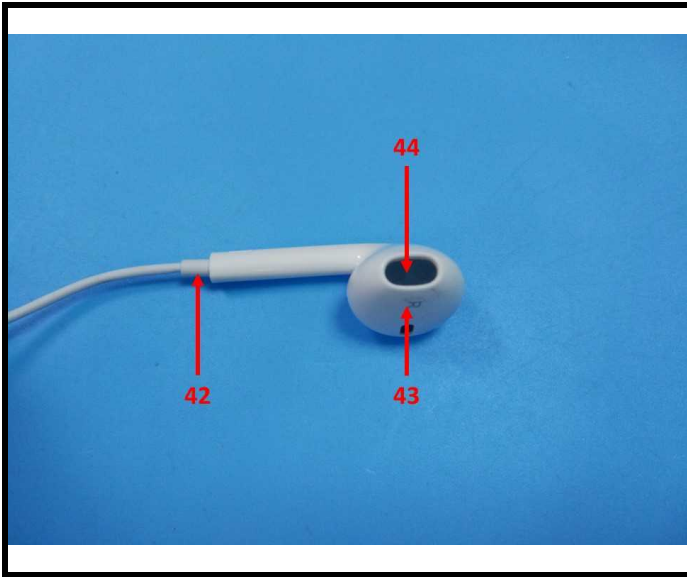


TEST REPORT

Report No.: SZ1240313-12683E

Date: April 19, 2024

Page 28 of 45

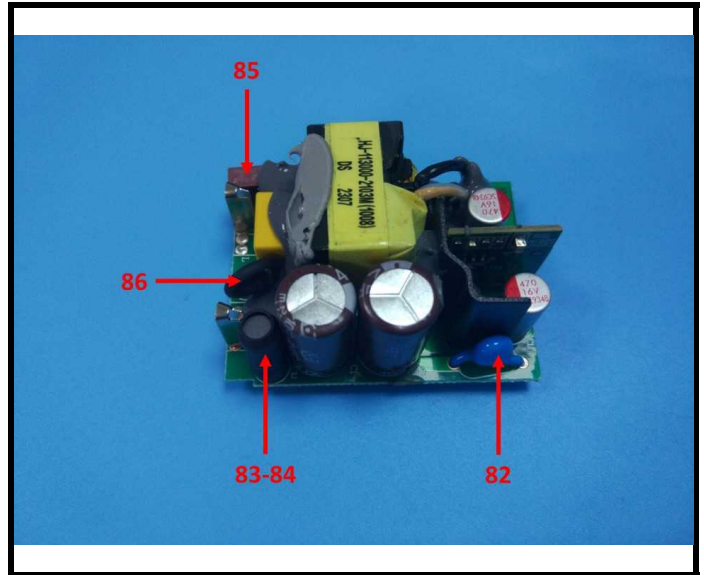
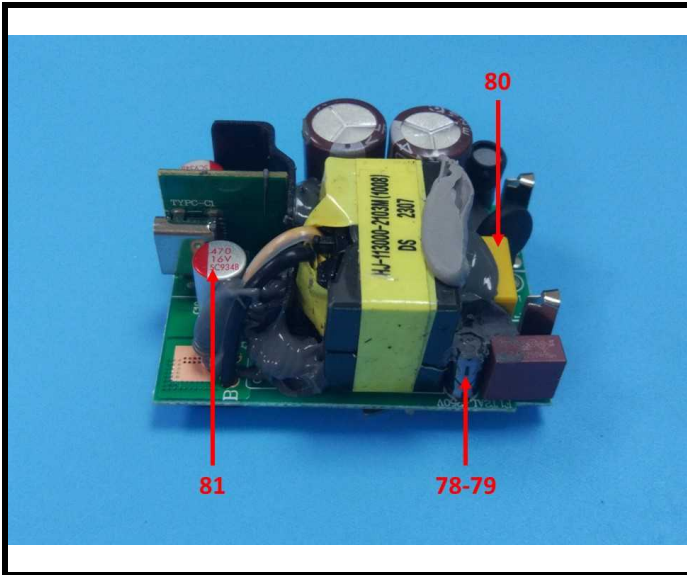
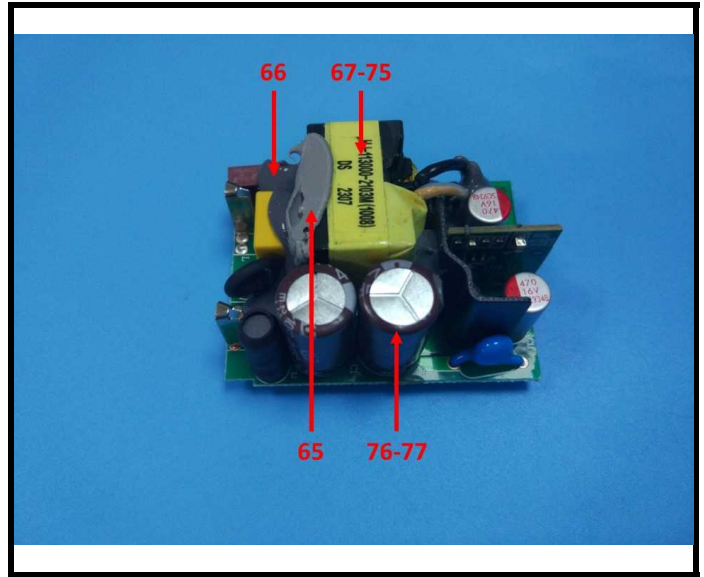
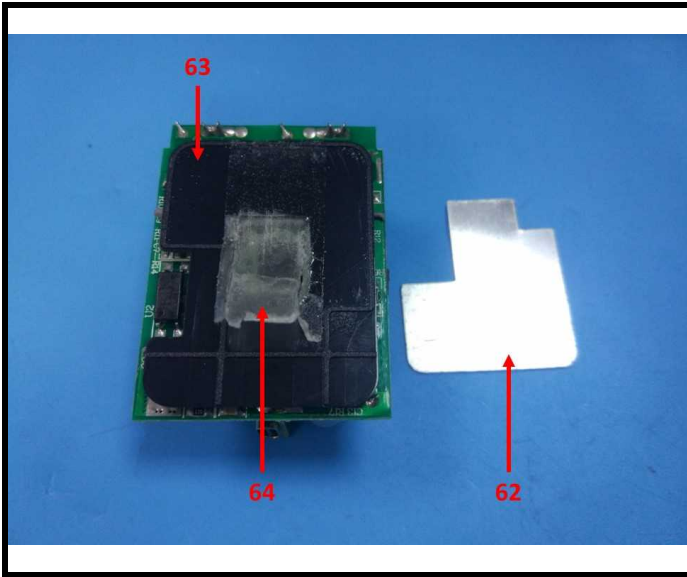


TEST REPORT

Report No.: SZ1240313-12683E

Date: April 19, 2024

Page 29 of 45

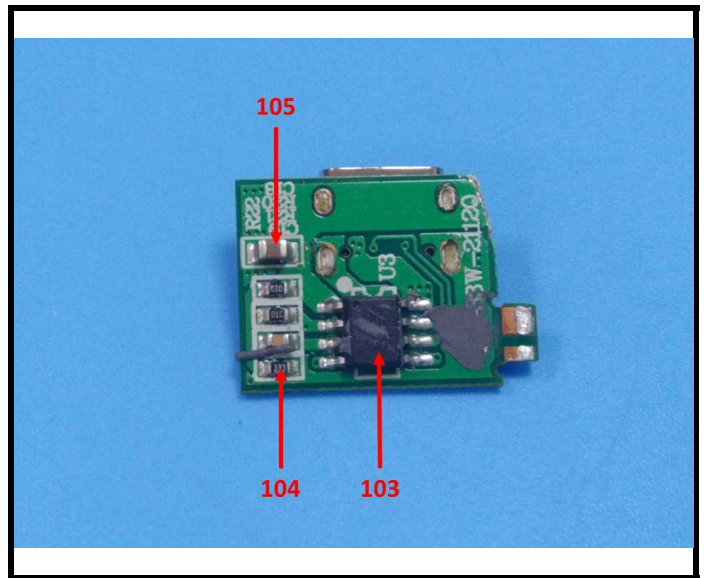
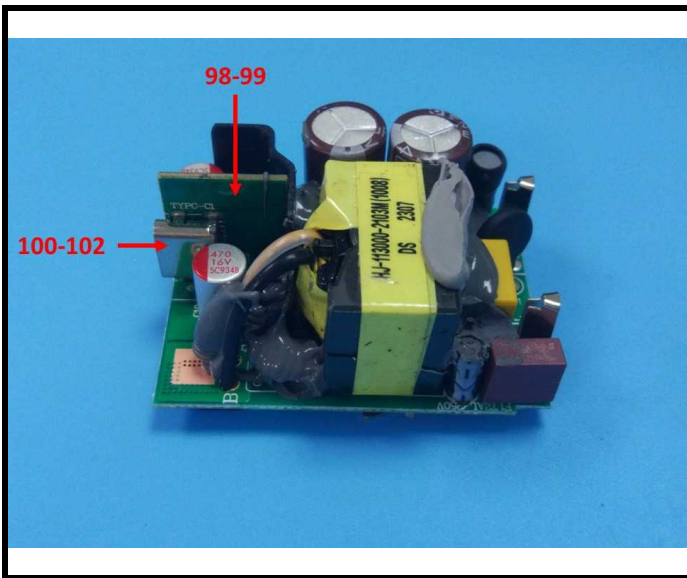
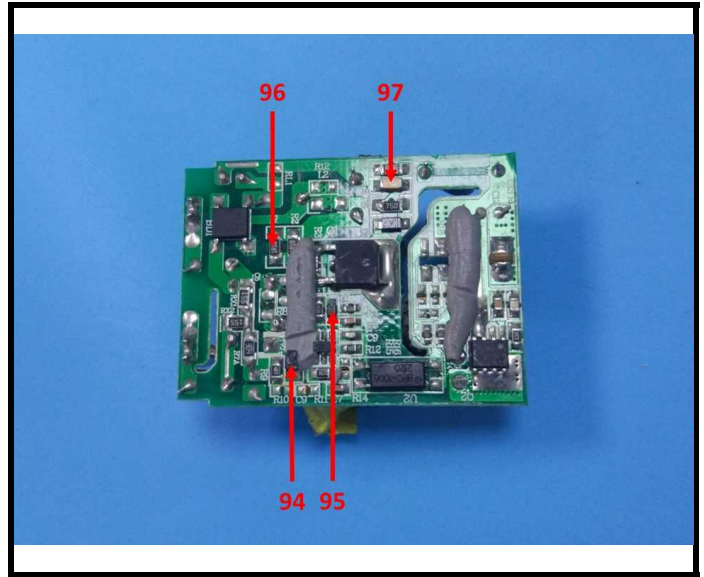
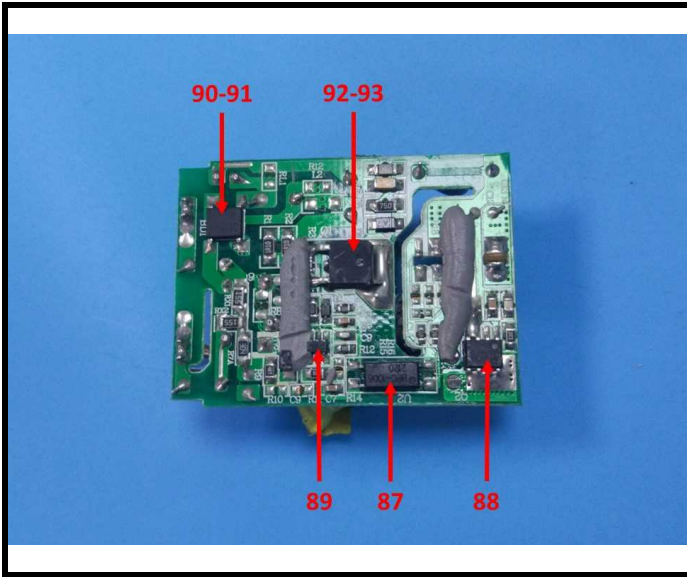


TEST REPORT

Report No.: SZ1240313-12683E

Date: April 19, 2024

Page 30 of 45

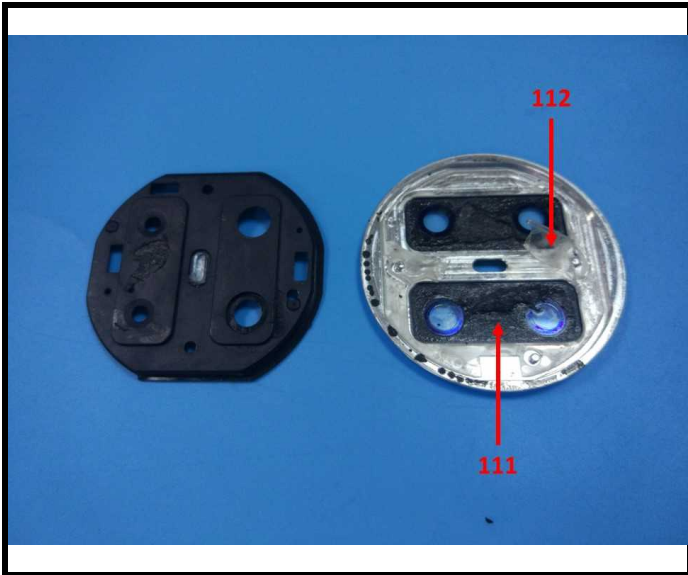
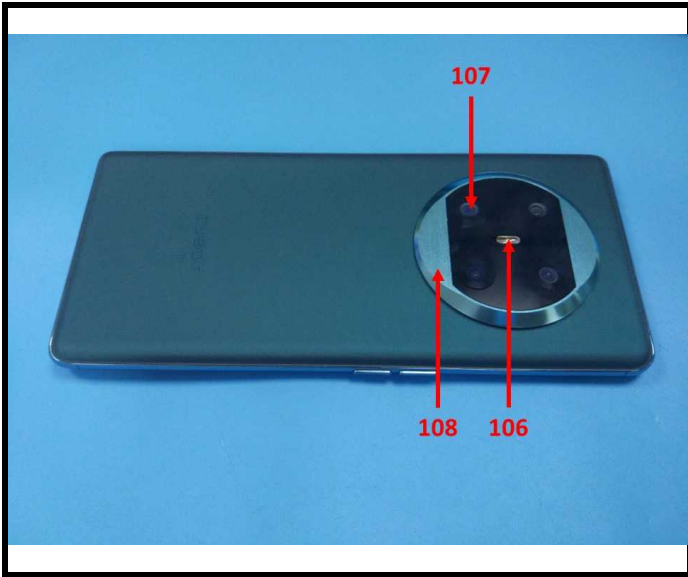


TEST REPORT

Report No.: SZ1240313-12683E

Date: April 19, 2024

Page 31 of 45

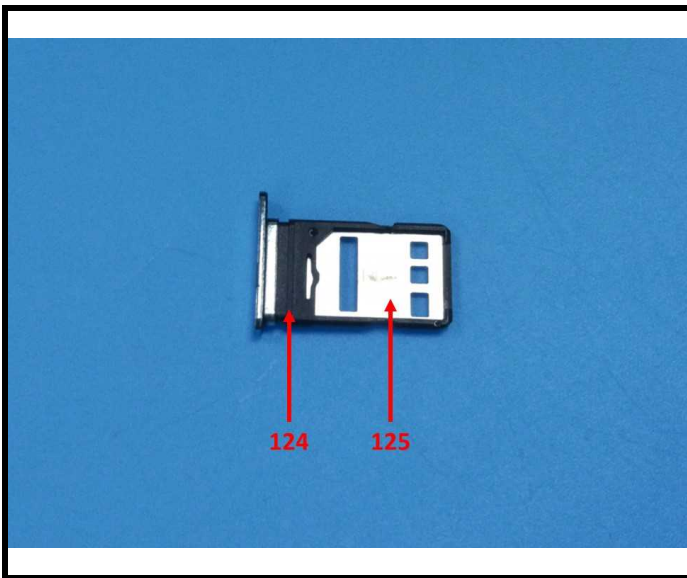
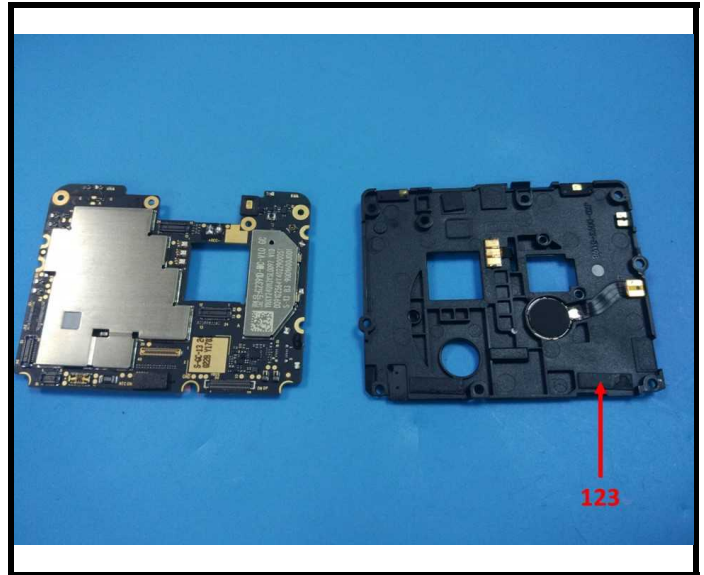
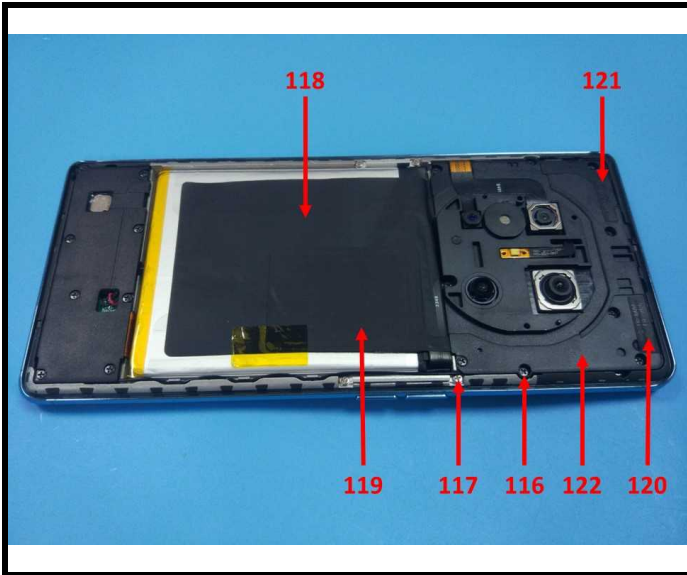


TEST REPORT

Report No.: SZ1240313-12683E

Date: April 19, 2024

Page 32 of 45

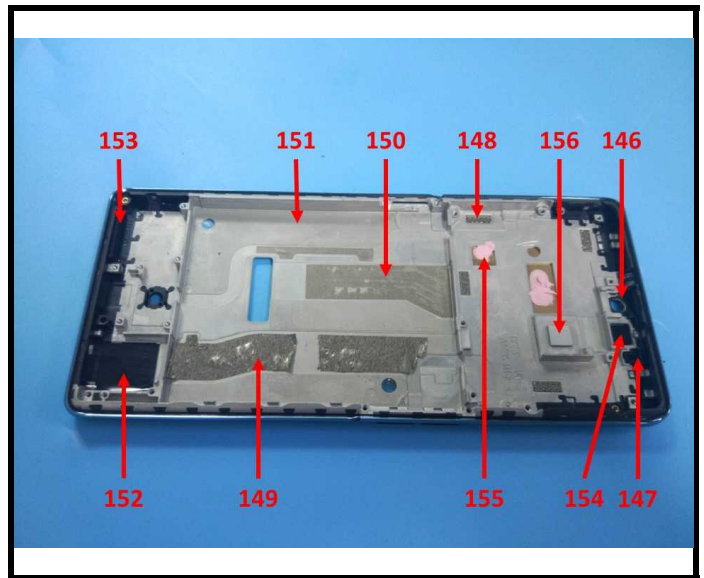
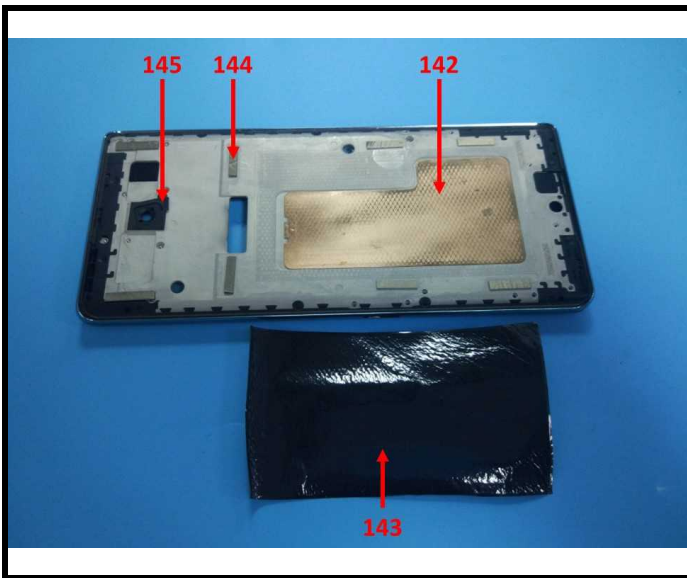
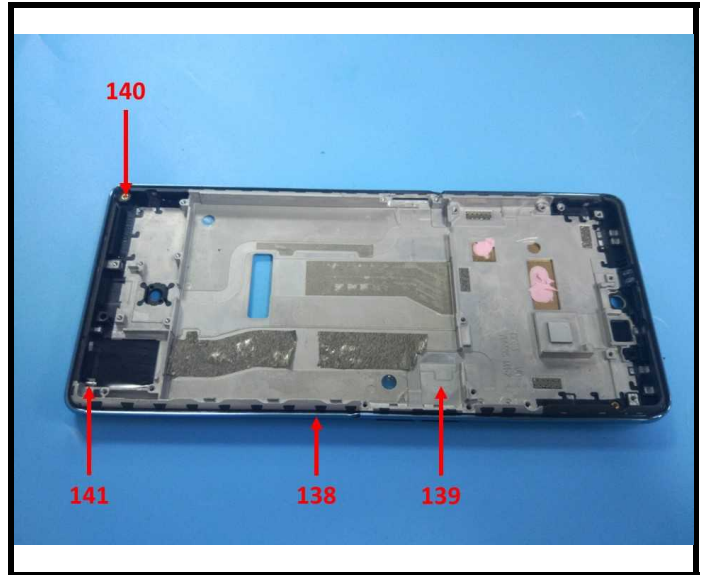


TEST REPORT

Report No.: SZ1240313-12683E

Date: April 19, 2024

Page 33 of 45

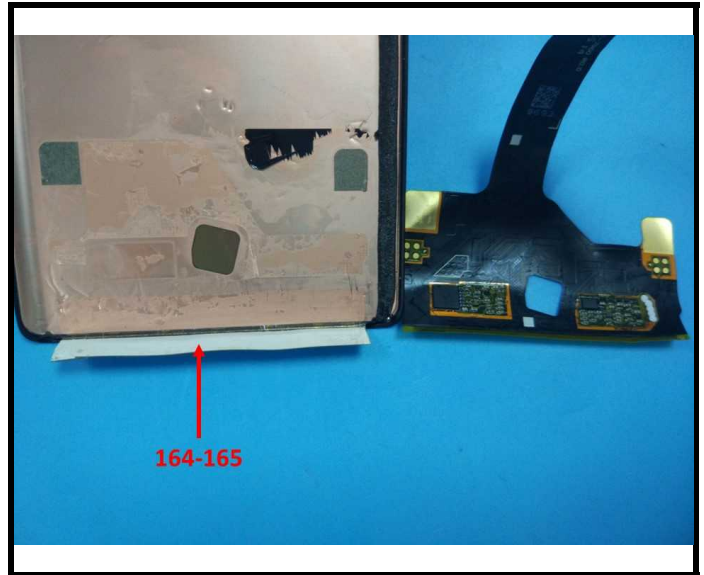
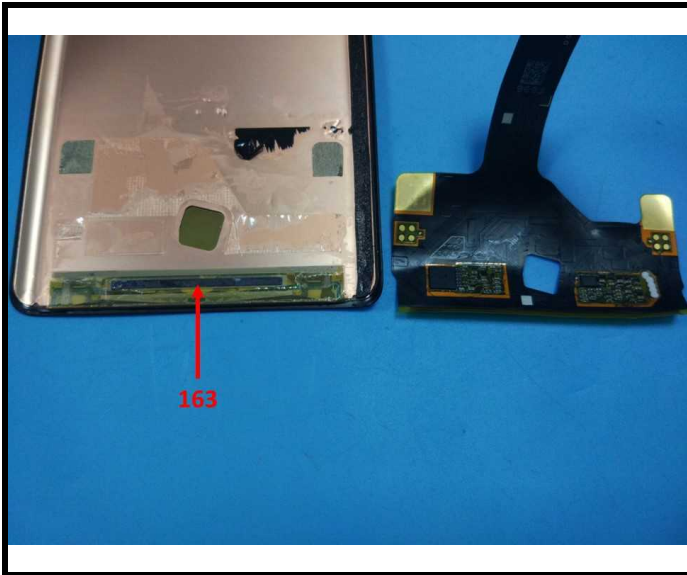
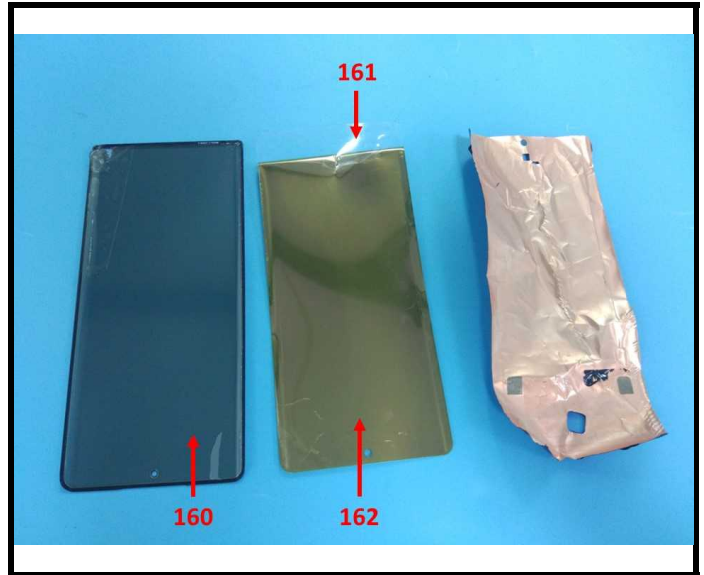
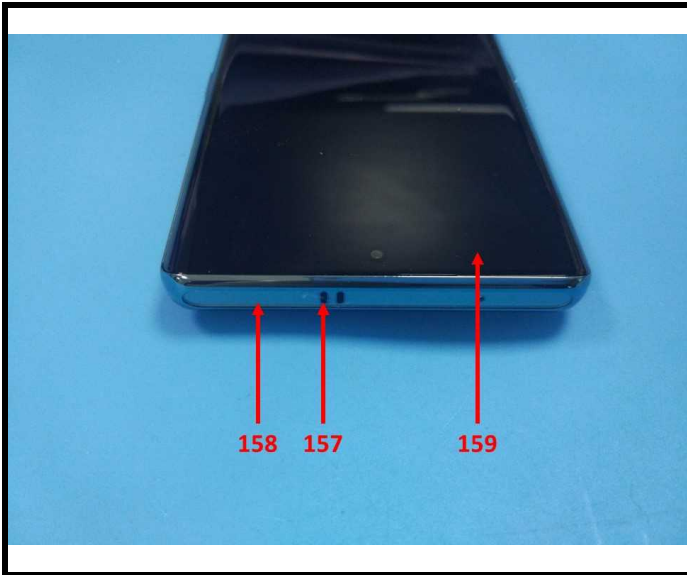


TEST REPORT

Report No.: SZ1240313-12683E

Date: April 19, 2024

Page 34 of 45

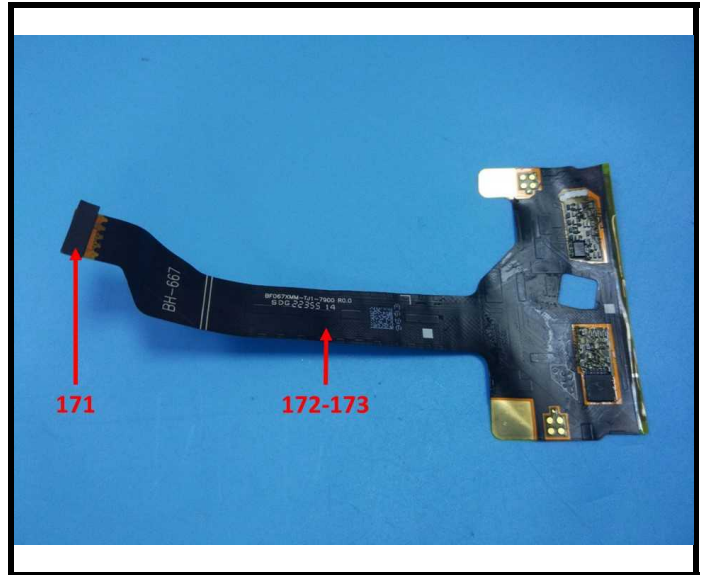
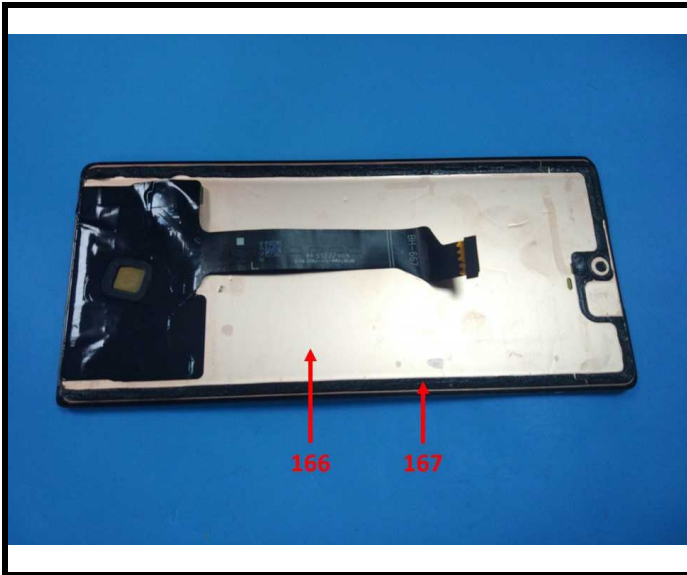


TEST REPORT

Report No.: SZ1240313-12683E

Date: April 19, 2024

Page 35 of 45

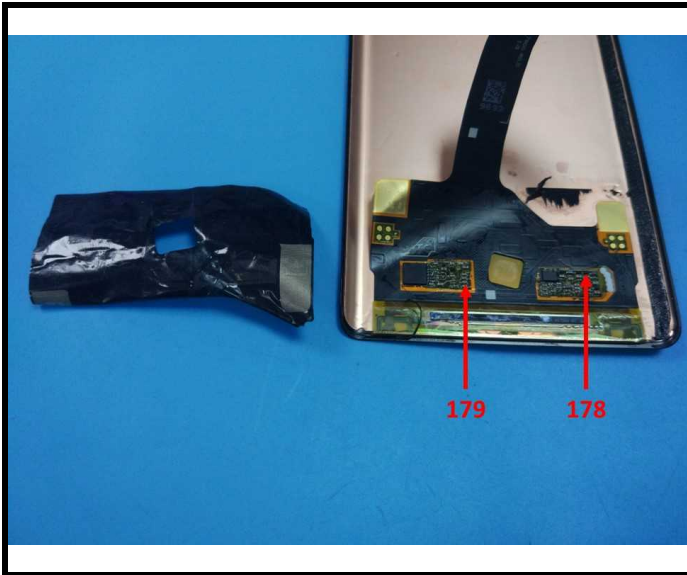
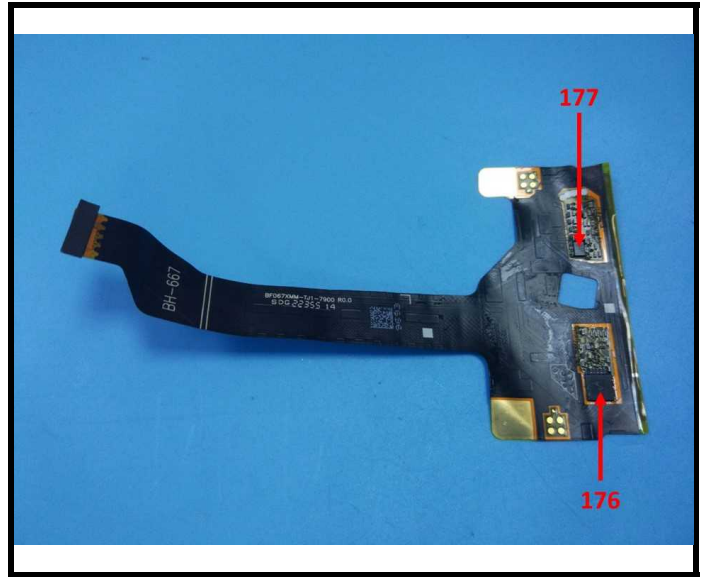


TEST REPORT

Report No.: SZ1240313-12683E

Date: April 19, 2024

Page 36 of 45



TEST REPORT

Report No.: SZ1240313-12683E

Date: April 19, 2024

Page 37 of 45

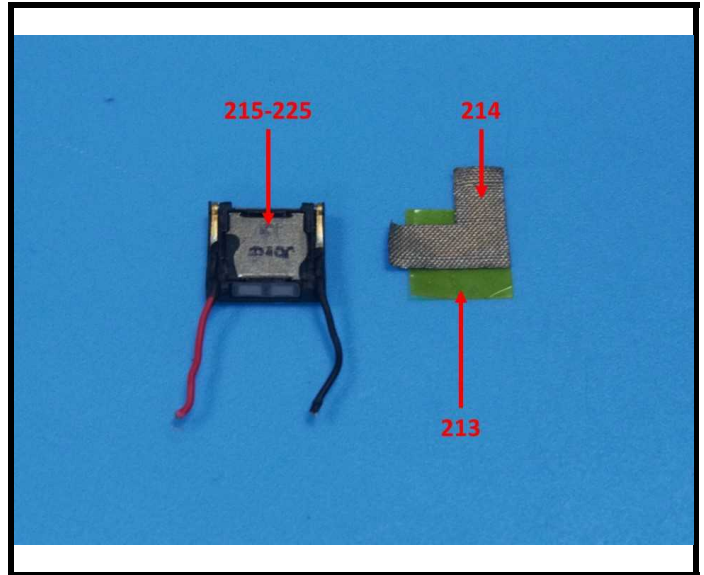
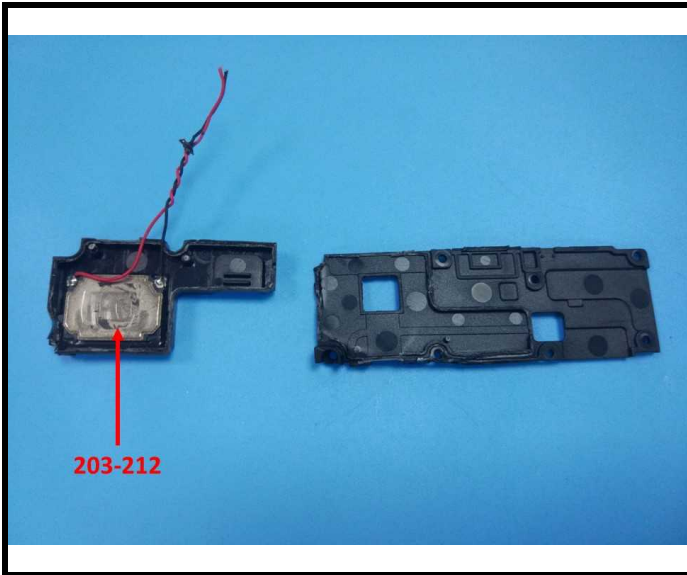
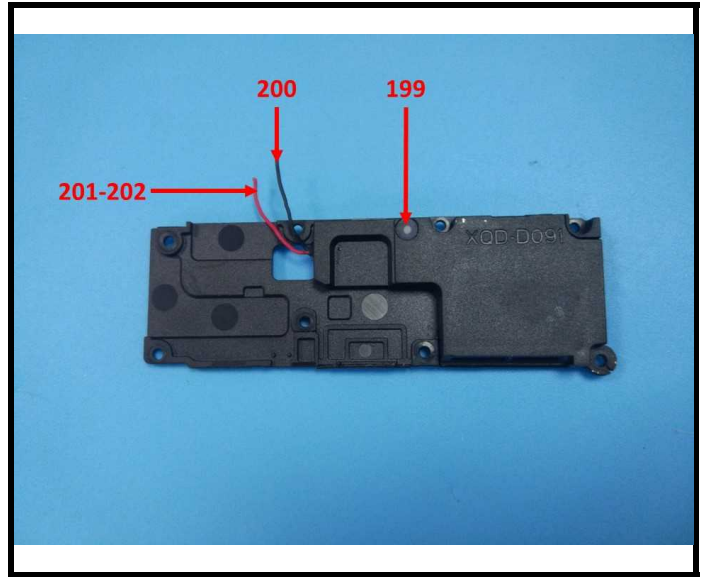
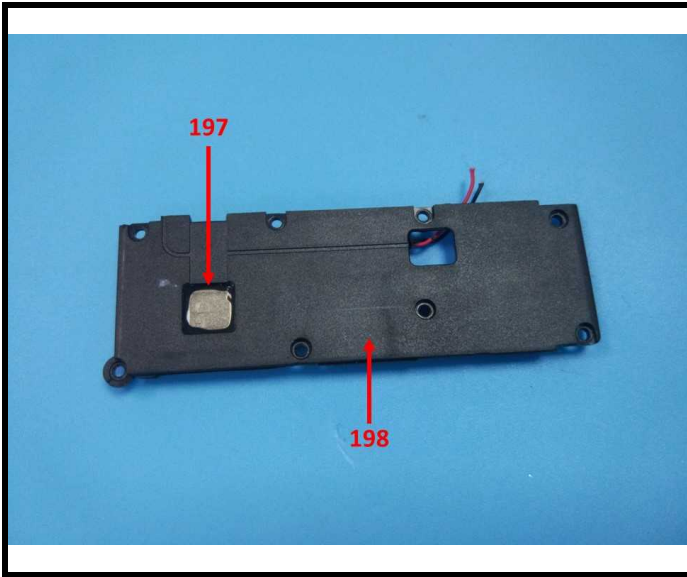


TEST REPORT

Report No.: SZ1240313-12683E

Date: April 19, 2024

Page 38 of 45

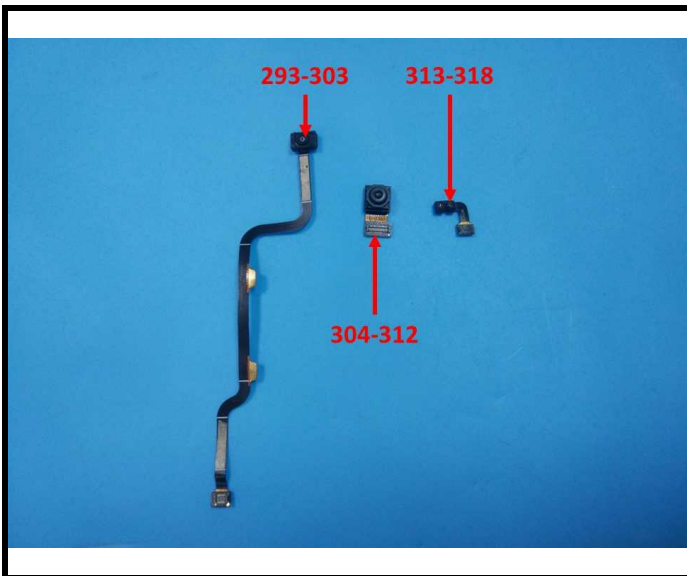
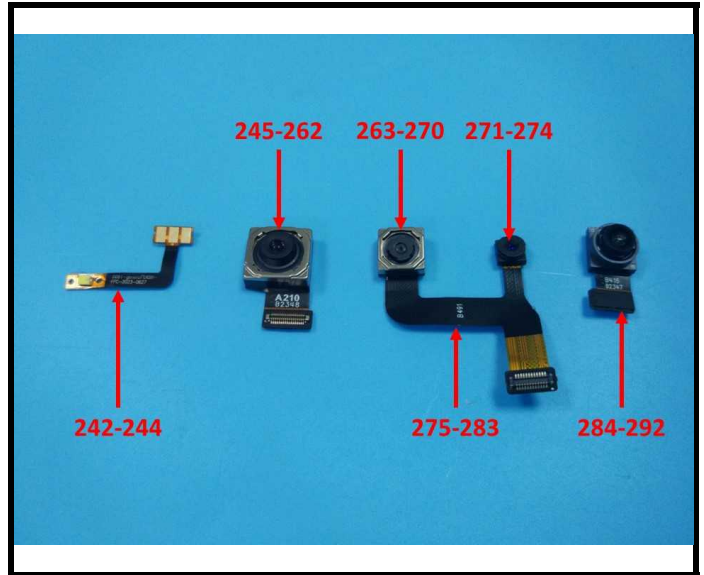
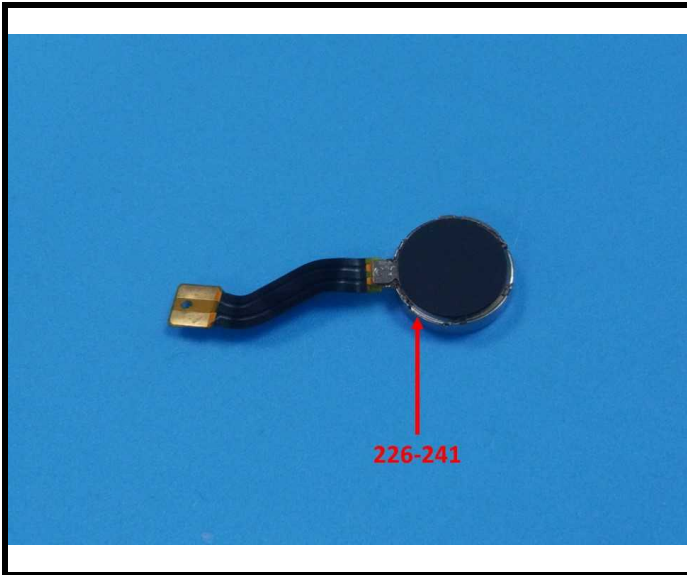


TEST REPORT

Report No.: SZ1240313-12683E

Date: April 19, 2024

Page 39 of 45

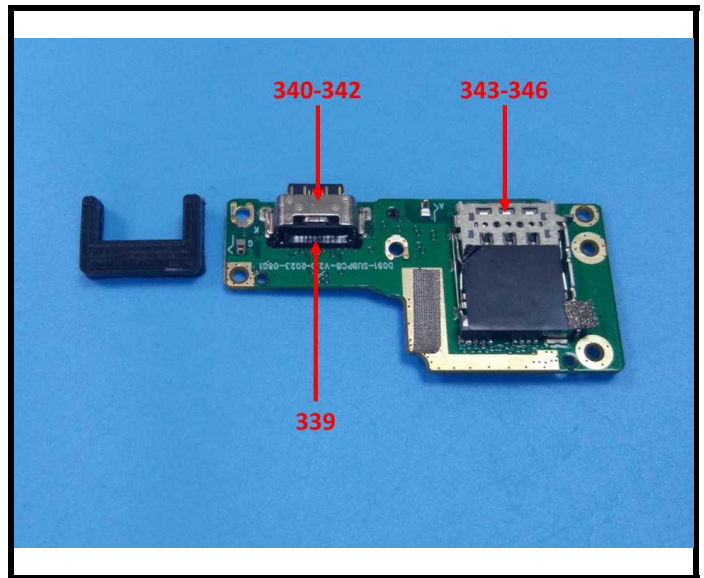
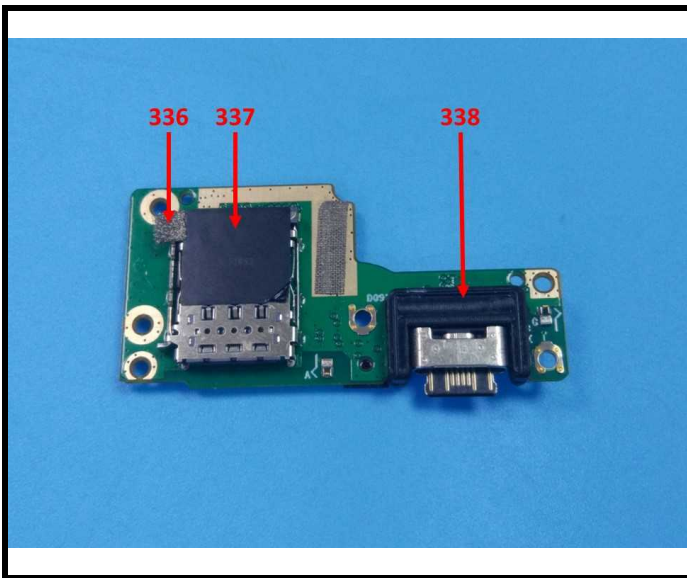
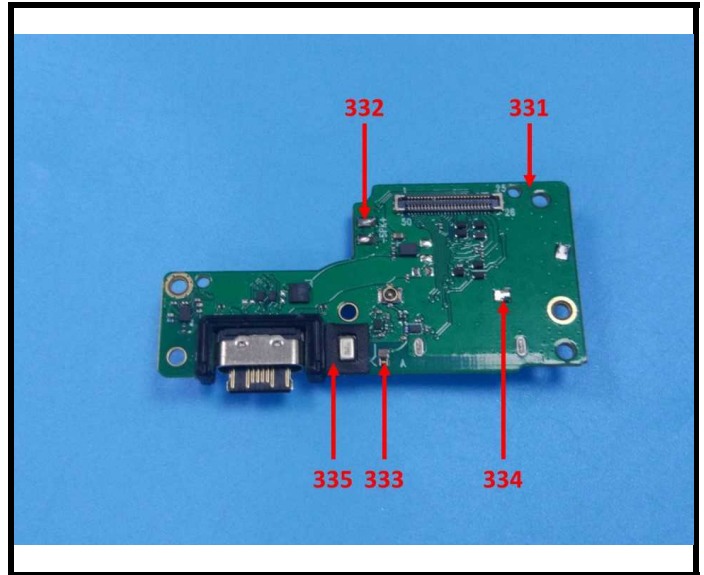
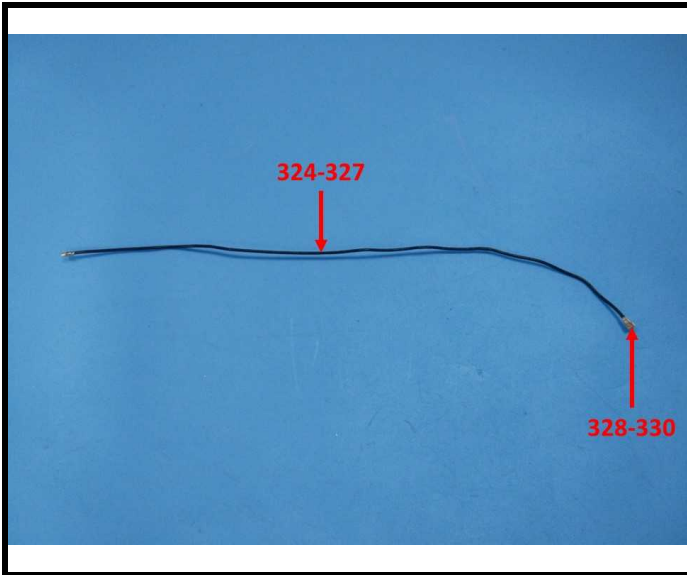


TEST REPORT

Report No.: SZ1240313-12683E

Date: April 19, 2024

Page 40 of 45

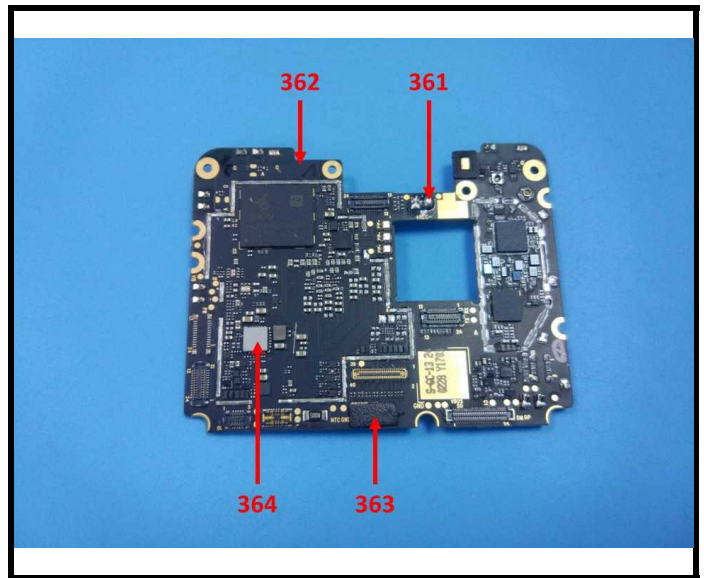
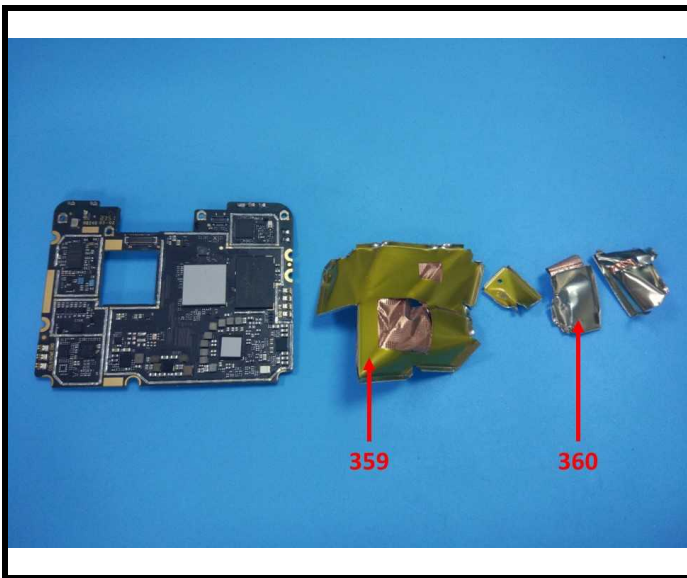
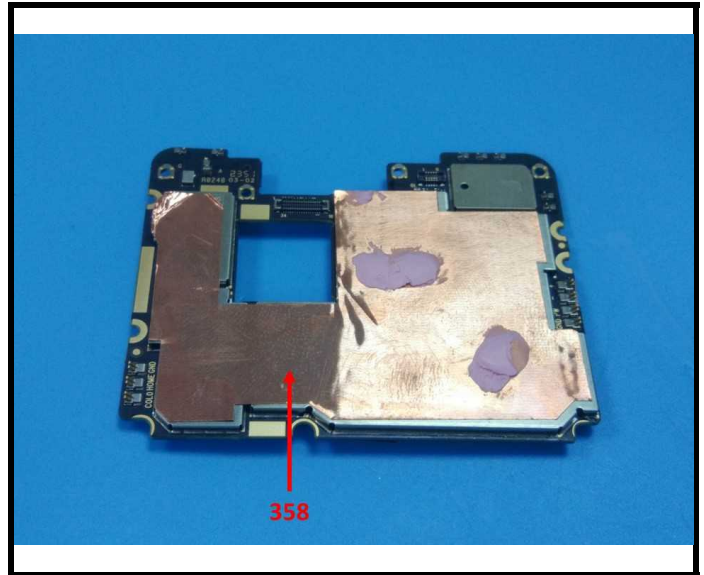
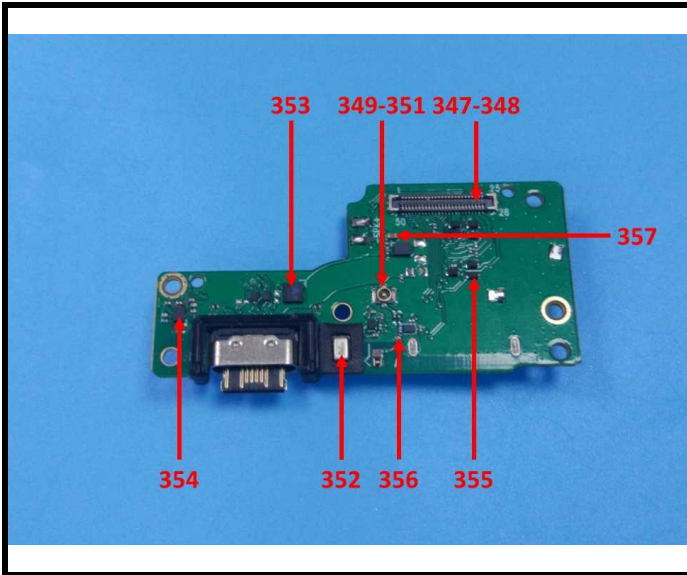


TEST REPORT

Report No.: SZ1240313-12683E

Date: April 19, 2024

Page 41 of 45

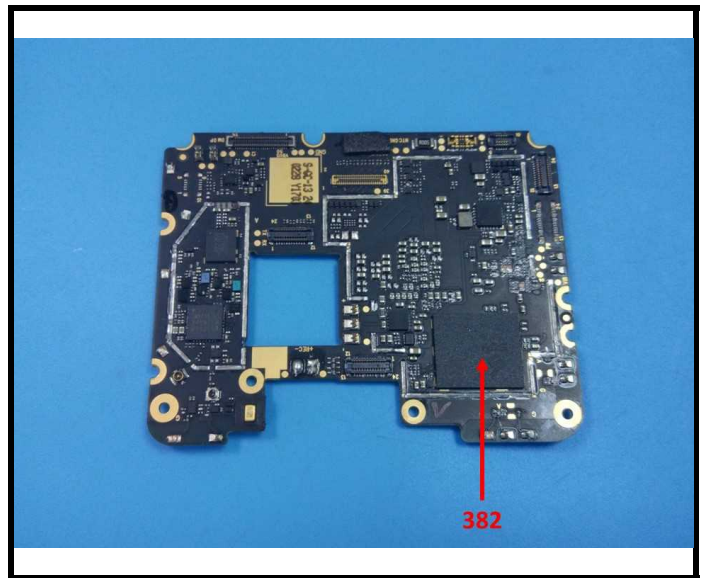
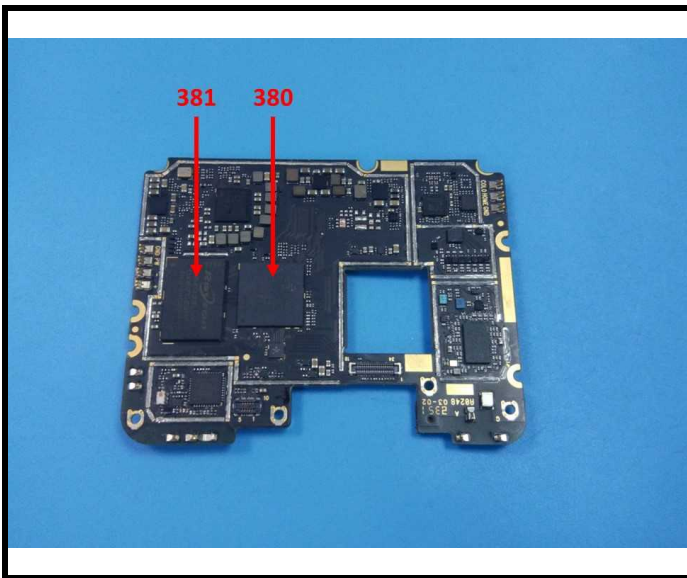
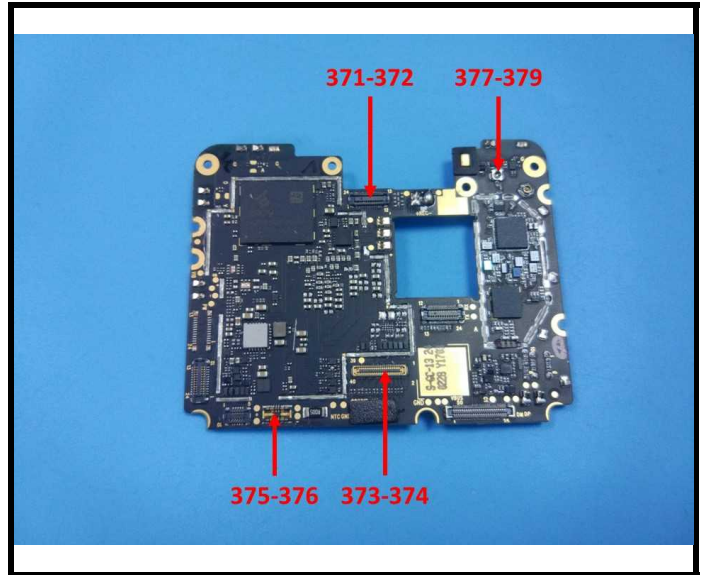
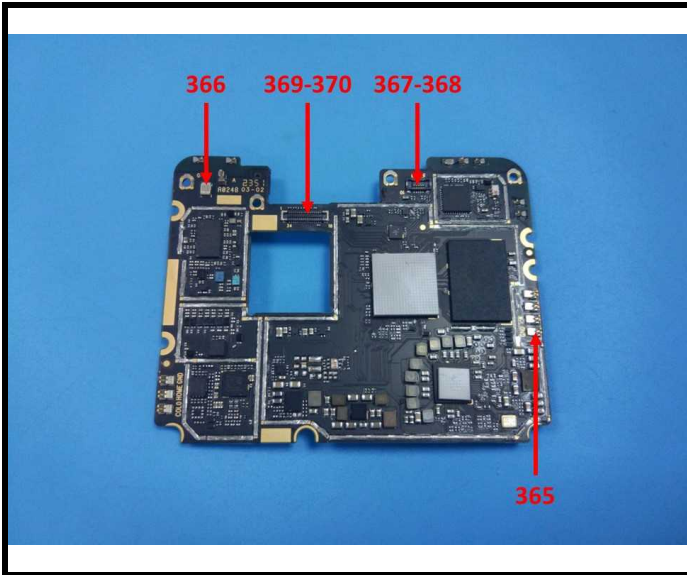


TEST REPORT

Report No.: SZ1240313-12683E

Date: April 19, 2024

Page 42 of 45

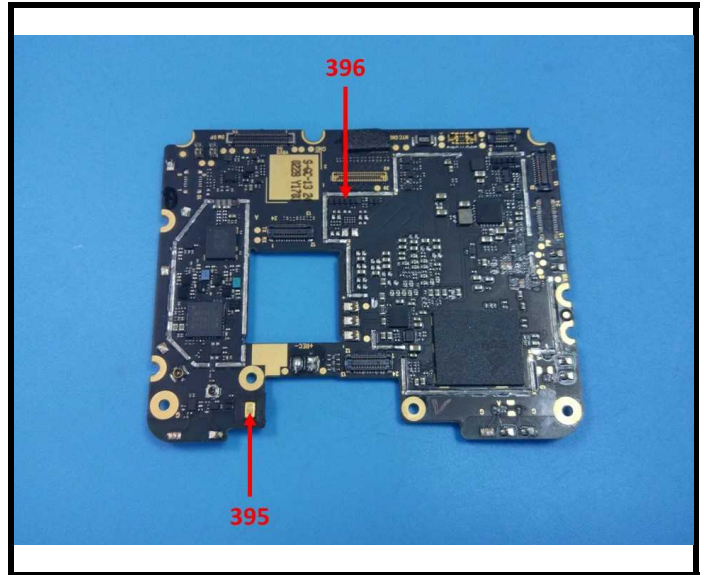
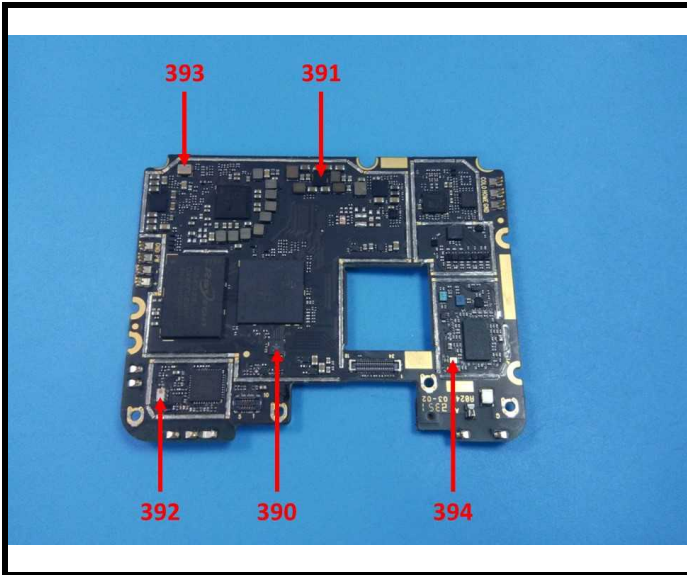
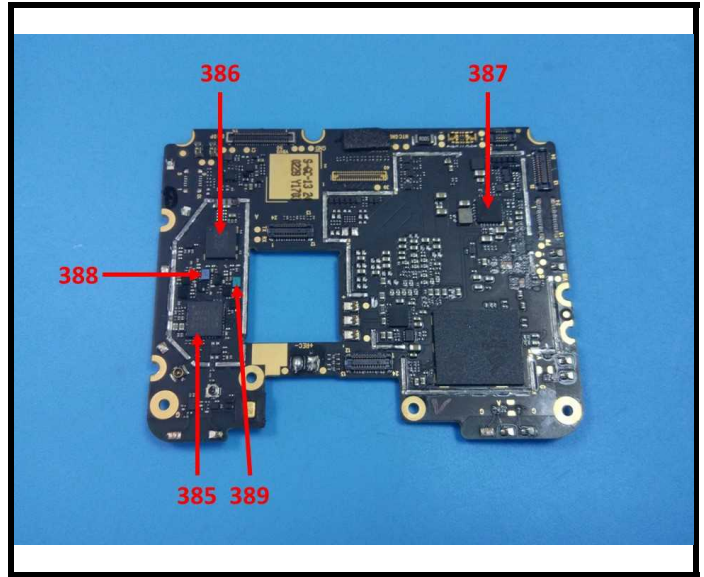
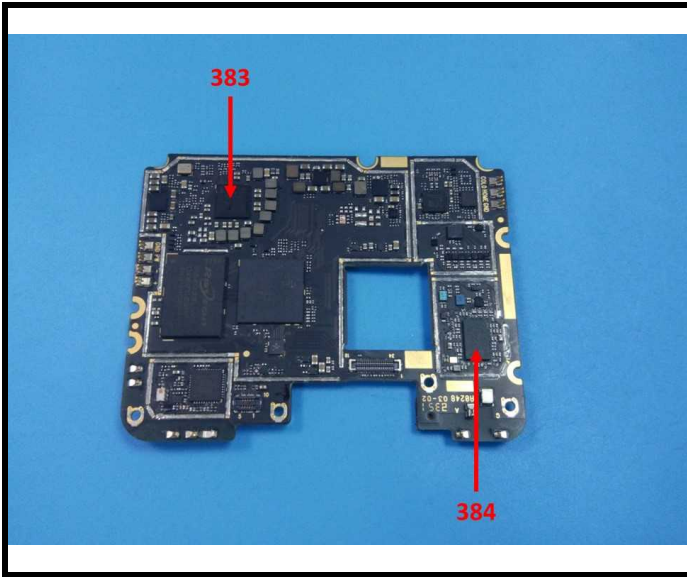


TEST REPORT

Report No.: SZ1240313-12683E

Date: April 19, 2024

Page 43 of 45

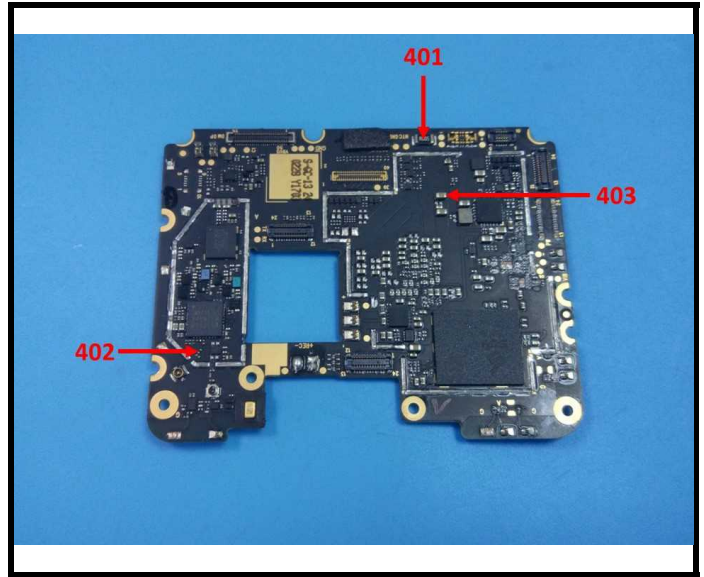
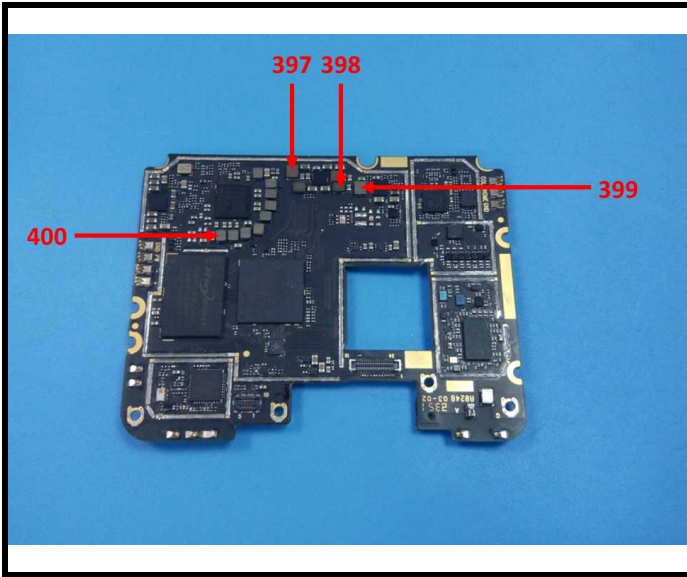


TEST REPORT

Report No.: SZ1240313-12683E

Date: April 19, 2024

Page 44 of 45



BACL authenticate the photo on original report only

TEST REPORT

Report No.: SZ1240313-12683E

Date: April 19, 2024

Page 45 of 45

Statement:

- 1.This report cannot be reproduced except in full, without prior written approval of the Company.
- 2.Unless otherwise stated the results shown in this test report refer only to the sample(s) tested and such sample(s) are retained for 30 days only.
- 3.This report is valid only with a valid digital signature. The digital signature may be available only under the Adobe software above version 7.0.
- 4.Otherwise required by the applicant or Product Regulations, Decision Rule in this report did not consider the uncertainty.
- 5.The information which provided by the applicant, such as sample description, sample name, material component, style/item No. , P.O. No. , manufacturer, age phase, the laboratory is not responsible for its authenticity and this information can affect the validity of the result in the test report.
- 6.The test samples were in good condition before testing.

*** End of Report ***